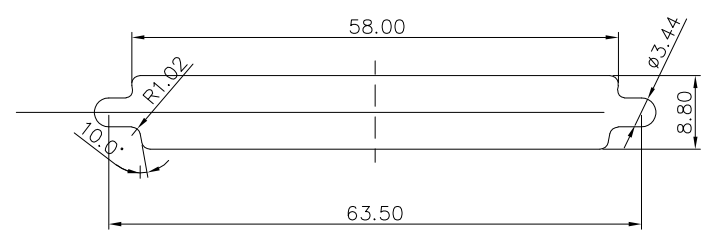


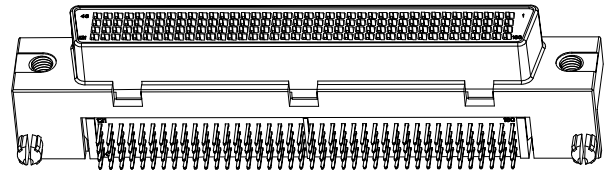
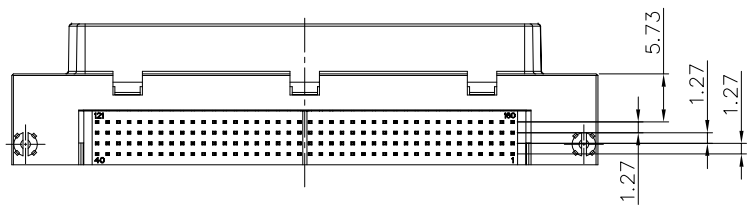
PCB layout



Panel size

Panel size

Rated current: 0.30A/contact
 Dielectric withstanding voltage: 250V AC
 Insulation resistance: 500MΩ min.
 Temperature range: -25°C to +105°C
 ROHS compliant



5	Board lock	Copper alloy	Plating: Sn
4	Cover	LCP UL 94V-0	Color: black
3	Housing	LCP UL 94V-0	Color: black
2	Shell	SPCC	Plating: Ni
1	Terminal	Phosphor bronze	Contact area: Au 15u * Solder area: Sn Under-plating: Ni
Item	Desc.	Material	Remark

A	△				QUALITY SYMBOLS	Tolerance	NAME:	LFH 160pin female right angle DIP type Connector			PART NO.	B04-160611HL-01		
	△				□: ☒:	x. ±0.60	REV:	A	UNIT:	mm	DRW BY	CHK BY	APP BY	DRAWING NO.
	△	2023/04/23	First edition release	Carl Hu	CRITICAL MAJOR	.x ±0.40	SCALE:	N:1	DATE:	2023/04/23	Huangmei	Carl Hu		B04-085
	△				▽: ▽:	.xx ±0.25								
	SIDE	DATE	DESCRIPTION	APPROVER	ZERO DEFECT	S.P.C			lineconn 东莞市林诚塑胶电子有限公司				http://www.lineconn.com TEL:0769-85181660 85181770	
	8	7	6	5	4	3	2	1						