

8 7 6 5 4 3 2 1

REVISIONS			
REV.	DESCRIPTION/ECN	DATE	APPROVED
A	PRELIMINARY RELEASE	2020/03/04	J.SHOBER
B	SHEET 2: ADDED (0.50 TYP) DIM	2020/04/08	J.SHOBER
C	ADDED BELLY TO BELLY CONTENT	2020/04/14	J.SHOBER
D	UPDATED FOOTPRINT WITH SMT PAD SIZE OF 1.3mm x 0.31mm REFLECTING MSA UPDATE (0.95mm x 0.31mm ON ENHANCED FOOTPRINT). UPDATED PART NUMBERS. ADDED DIM 2X (0.95). UPDATED MAX POWER RATING TO 1.5A (NOTE 3).	2020/06/12	J.SHOBER
E	UPDATED DRAWING TITLE	2021/02/09	J.SHOBER
F	HOUSING SLOT DIM 1.14 WAS 1.24	2021/02/17	J.SHOBER
G	INCREASE WIDTH OF MATING CONTACTS AND MADE RELATED MODIFICATION TO THE HOUSING SNOUT. ADD CUSTOMIZED PACKAGE OPTION "1T"	2022/09/23	J.SHOBER

### AMPHENOL PART NUMBER CONFIGURATION

V36-ADZ01-X0X00XX



**PACKAGING**

0T=TAPE AND REEL, WIDTH 32mm  
1T=TAPE AND REEL, WIDTH 44mm

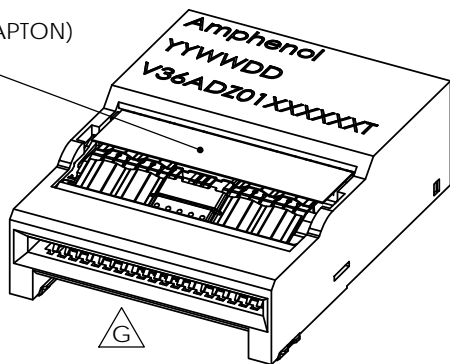
**TERMINATION OPTIONS**

1=STANDARD SINGLE SIDE  
7=SOLDER RINGS

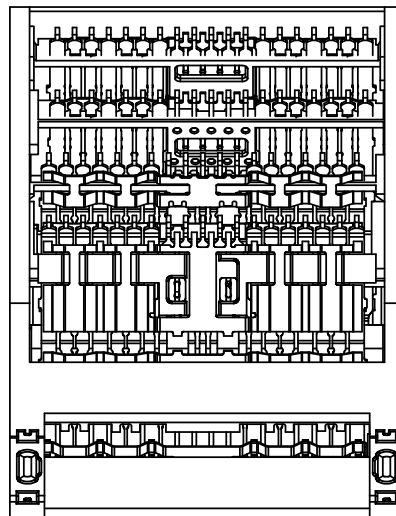
**PLATING OPTION**

2 = 0.76 μm MIN. GXT,  
MATTE TIN ON SOLDER TERMINATIONS  
3 = 0.76 μm MIN. GOLD,  
MATTE TIN ON SOLDER TERMINATIONS  
6 = 0.38 μm MIN. GOLD,  
MATTE TIN ON SOLDER TERMINATIONS

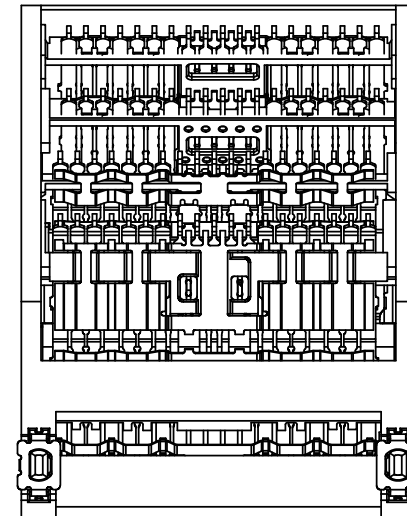
POLYIMIDE (KAPTON)  
TAPE



**ISOMETRIC VIEW**  
SCALE 3:1



V36-ADZ01-X0100XT  
STANDARD  
(SINGLE-SIDE MOUNT)



V36-ADZ01-X0700XT  
(WITH SOLDER RINGS  
FOR BELLY TO BELLY  
MOUNTING)

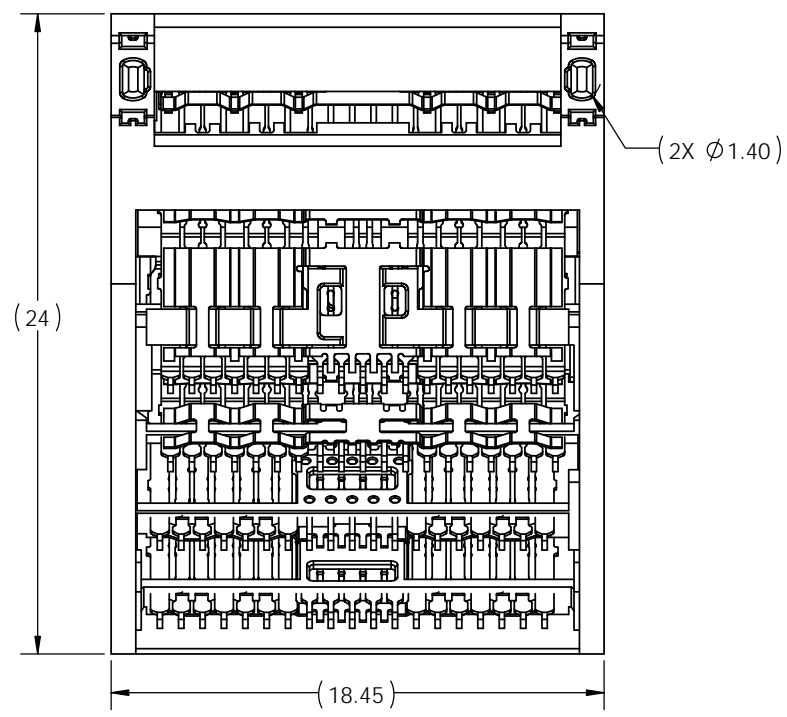
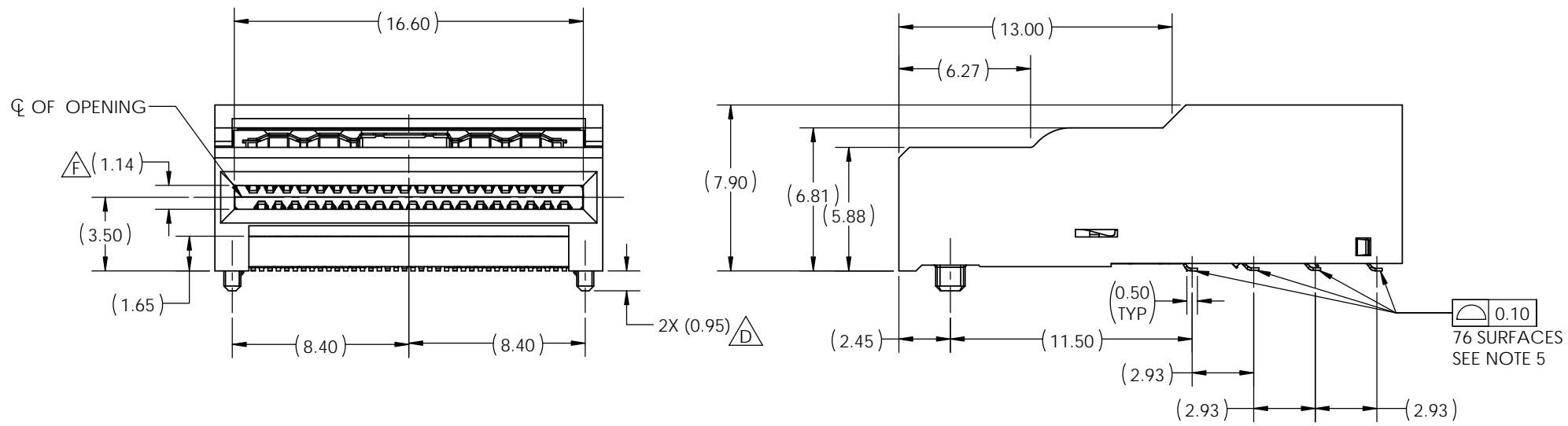
Release Level	In Work	ECN	<b>Amphenol High Speed Interconnects</b> A Division of Amphenol Corp. www.amphenol-icc.com Title: QSFP-DD SMT 112G CONNECTOR ASSEMBLY 0.8mm PITCH, 76-PIN Product Family: QSFP-DD SMT 112G Dwg. No. P-V36-ADZ01
Drawn	HCL-VK	2020/03/04	
Designed	J.SHOBER	2020/03/04	
Guardian	J.SHOBER	2020/03/04	
Approver			REV G
		TOLERANCES UNLESS OTHERWISE SPECIFIED Linear X.X ±0.25 X.XX ±0.13 X.XXX - Angular X° ±3°	
Drawing Units: mm Scale: 4:1   Dwg Size: A3   Product - Customer Drw		SHEET 1 OF 7	



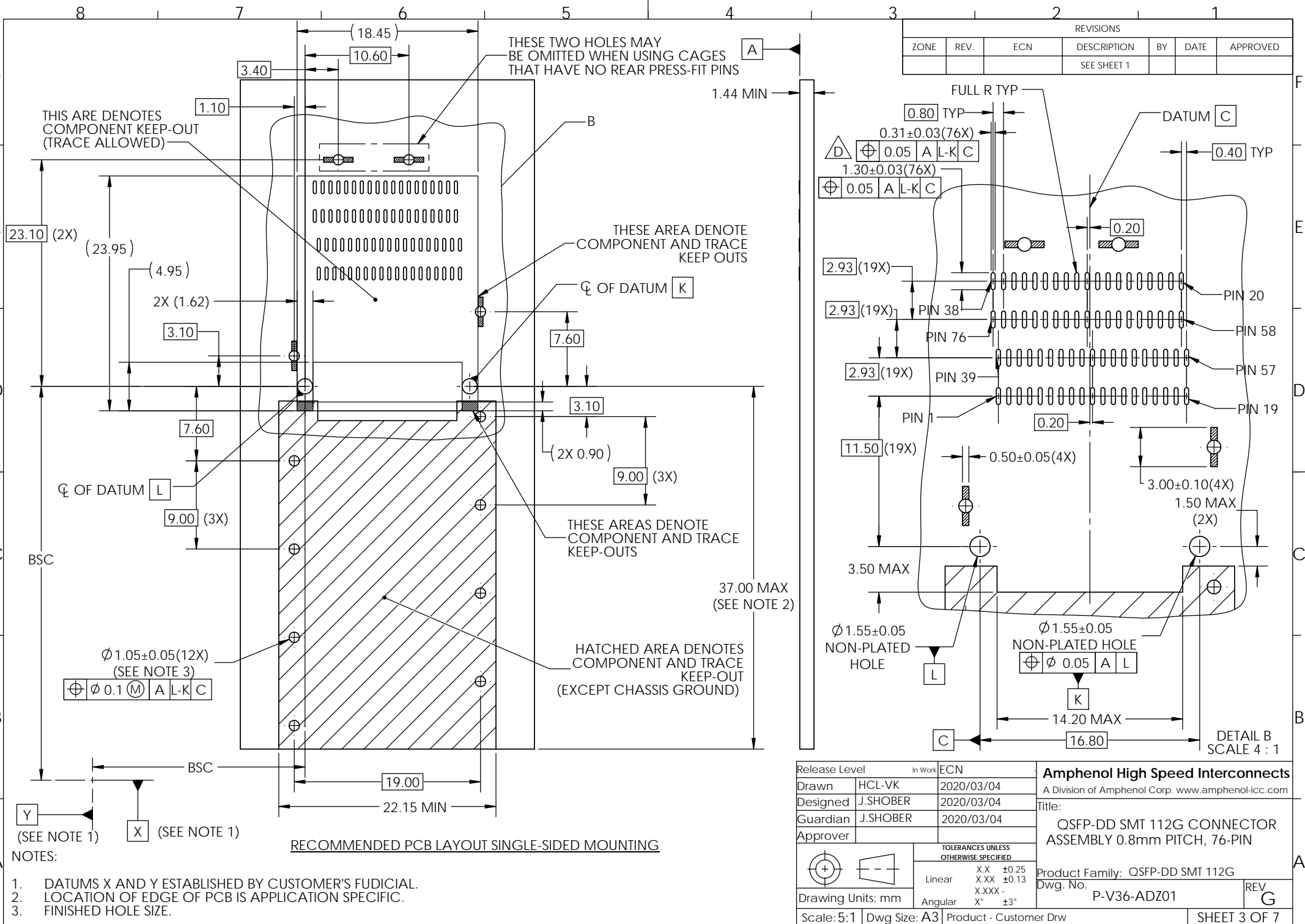
DO NOT SCALE

© 2020 AMPHENOL CANADA CORP.

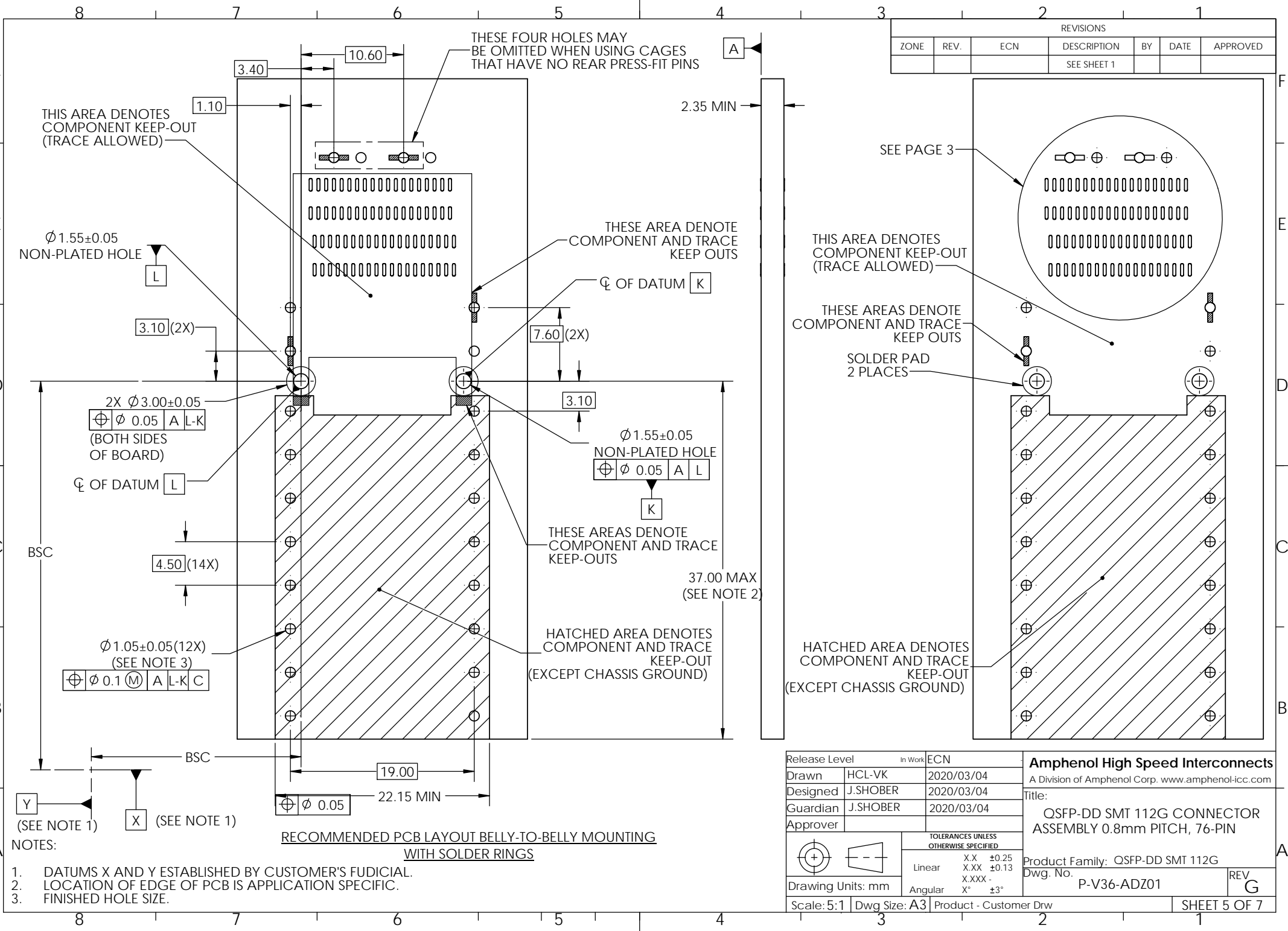
REVISIONS			
REV.	DESCRIPTION/ECN	DATE	APPROVED
	SEE SHEET 1		



Release Level	In Work	ECN	<b>Amphenol High Speed Interconnects</b> A Division of Amphenol Corp. www.amphenol-icc.com Title: <b>QSFP-DD SMT 112G CONNECTOR ASSEMBLY 0.8mm PITCH, 76-PIN</b> Product Family: QSFP-DD SMT 112G Dwg. No. P-V36-ADZ01
Drawn	HCL-VK	2020/03/04	
Designed	J.SHOBER	2020/03/04	
Guardian	J.SHOBER	2020/03/04	
Approver			REV G
		<b>TOLERANCES UNLESS OTHERWISE SPECIFIED</b> Linear    X.X    ±0.25 X.XX   ±0.13 X.XXX - Angular    X°    ±3°	
Scale: 5:1	Dwg Size: A3	Product - Customer Drw	SHEET 2 OF 7







REVISIONS						
ZONE	REV.	ECN	DESCRIPTION	BY	DATE	APPROVED
			SEE SHEET 1			

THIS AREA DENOTES COMPONENT KEEP-OUT (TRACE ALLOWED)

THESE FOUR HOLES MAY BE OMITTED WHEN USING CAGES THAT HAVE NO REAR PRESS-FIT PINS

Ø 1.55±0.05 NON-PLATED HOLE

THESE AREA DENOTE COMPONENT AND TRACE KEEP OUTS

THIS AREA DENOTES COMPONENT KEEP-OUT (TRACE ALLOWED)

THESE AREAS DENOTE COMPONENT AND TRACE KEEP OUTS

SOLDER PAD 2 PLACES

THESE AREAS DENOTE COMPONENT AND TRACE KEEP-OUTS

HATCHED AREA DENOTES COMPONENT AND TRACE KEEP-OUT (EXCEPT CHASSIS GROUND)

HATCHED AREA DENOTES COMPONENT AND TRACE KEEP-OUT (EXCEPT CHASSIS GROUND)

2X Ø 3.00±0.05  
⊕ Ø 0.05 A L-K  
(BOTH SIDES OF BOARD)

Ø 1.55±0.05 NON-PLATED HOLE  
⊕ Ø 0.05 A L  
K

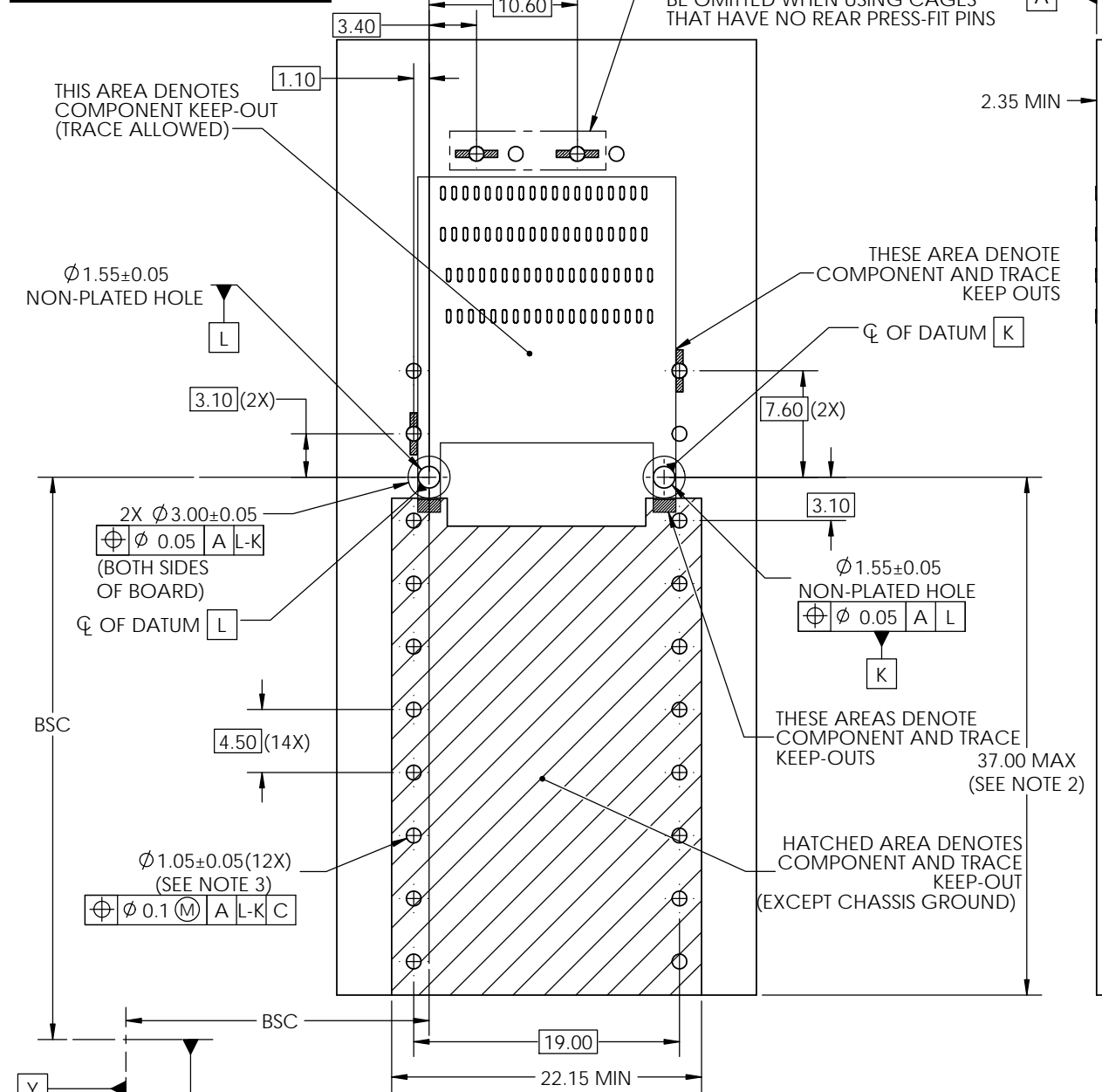
Ø 1.05±0.05(12X)  
(SEE NOTE 3)  
⊕ Ø 0.1 M A L-K C

**NOTES:**  
 1. DATUMS X AND Y ESTABLISHED BY CUSTOMER'S FUDICIAL.  
 2. LOCATION OF EDGE OF PCB IS APPLICATION SPECIFIC.  
 3. FINISHED HOLE SIZE.

**RECOMMENDED PCB LAYOUT BELLY-TO-BELLY MOUNTING WITH SOLDER RINGS**

Release Level	In Work	ECN	<b>Amphenol High Speed Interconnects</b> A Division of Amphenol Corp. www.amphenol-icc.com Title: QSFP-DD SMT 112G CONNECTOR ASSEMBLY 0.8mm PITCH, 76-PIN Product Family: QSFP-DD SMT 112G Dwg. No. P-V36-ADZ01 REV G
Drawn	HCL-VK	2020/03/04	
Designed	J.SHOBER	2020/03/04	
Guardian	J.SHOBER	2020/03/04	
Approver			
		TOLERANCES UNLESS OTHERWISE SPECIFIED Linear X.X ±0.25 X.XX ±0.13 X.XXX - Angular X° ±3°	
Drawing Units: mm		Scale: 5:1   Dwg Size: A3   Product - Customer Drw	
SHEET 5 OF 7			

**ENHANCED FOOTPRINT**



- NOTES:
- DATUMS X AND Y ESTABLISHED BY CUSTOMER'S FUDICIAL.
  - LOCATION OF EDGE OF PCB IS APPLICATION SPECIFIC.
  - FINISHED HOLE SIZE.

**RECOMMENDED PCB LAYOUT BELLY-TO-BELLY MOUNTING WITH SOLDER RINGS**

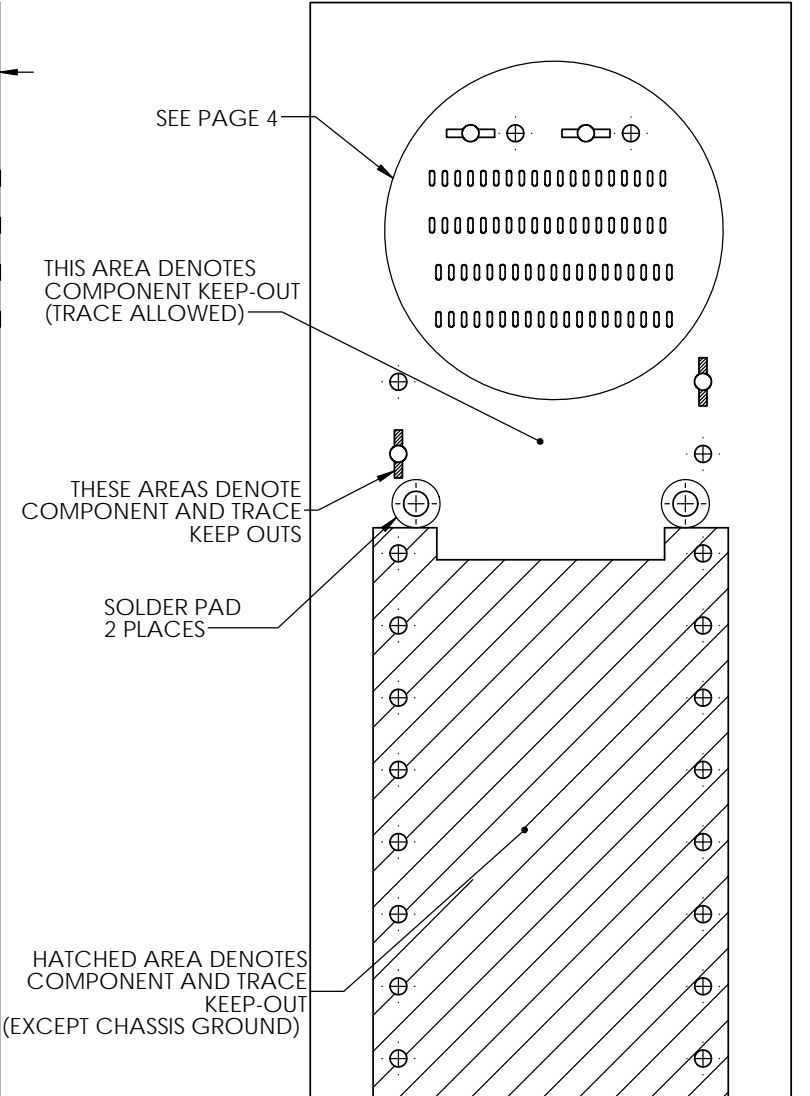
THESE FOUR HOLES MAY BE OMITTED WHEN USING CAGES THAT HAVE NO REAR PRESS-FIT PINS

THESE AREA DENOTE COMPONENT AND TRACE KEEP OUTS

THESE AREAS DENOTE COMPONENT AND TRACE KEEP-OUTS

HATCHED AREA DENOTES COMPONENT AND TRACE KEEP-OUT (EXCEPT CHASSIS GROUND)

REVISIONS						
ZONE	REV.	ECN	DESCRIPTION	BY	DATE	APPROVED
			SEE SHEET 1			



Release Level	In Work	ECN	<b>Amphenol High Speed Interconnects</b> A Division of Amphenol Corp. www.amphenol-icc.com Title: QSFP-DD SMT 112G CONNECTOR ASSEMBLY 0.8mm PITCH, 76-PIN Product Family: QSFP-DD SMT 112G Dwg. No. P-V36-ADZ01
Drawn	HCL-VK	2020/03/04	
Designed	J.SHOBER	2020/03/04	
Guardian	J.SHOBER	2020/03/04	
Approver			REV G
Drawing Units: mm Scale: 5:1   Dwg Size: A3   Product - Customer Drw		SHEET 6 OF 7	

@ 2020 AMPHENOL CANADA CORP.

8 7 6 5 4 3 2 1

F

E

D

C

B

A

F

E

D

C

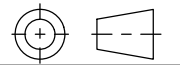
B

A

REVISIONS			
REV.	DESCRIPTION/ECN	DATE	APPROVED
	SEE SHEET 1		

NOTES:

- MATERIAL: SOLDER PROCESS REFLOW COMPATIBLE LCP, UL 94 V-0  
CONTACTS: COPPER ALLOY. SEE PART NUMBER TREE FOR PLATING DETAILS
- RoHS COMPLIANT.
- PERFORMANCE: 0.50A MAX. SIGNAL CONTACTS  
1.5A MAX. POWER CONTACTS  
MECHANICAL: 100 MATING CYCLES MIN.
- COMPLIES WITH QSFP-DD MSA.
- SOLDER LEAD COPLANARITY IS INSPECTED WITH RESPECT TO A BEST-FIT PLANE ESTABLISHED BY ALL 76 LEADS.

Release Level	In Work	ECN	<b>Amphenol High Speed Interconnects</b> A Division of Amphenol Corp. www.amphenol-icc.com Title: <b>QSFP-DD SMT 112G CONNECTOR ASSEMBLY 0.8mm PITCH, 76-PIN</b> Product Family: QSFP-DD SMT 112G Dwg. No. P-V36-ADZ01
Drawn	HCL-VK	2020/03/04	
Designed	J.SHOBER	2020/03/04	
Guardian	J.SHOBER	2020/03/04	
Approver			
		<b>TOLERANCES UNLESS OTHERWISE SPECIFIED</b>	
Drawing Units: mm		Linear	X.X ±0.25 X.XX ±0.13 X.XXX - Angular X° ±3°
Scale: 5:1	Dwg Size: A3	Product - Customer Drw	REV G SHEET 7 OF 7

8 7 6 5 4 3 2 1