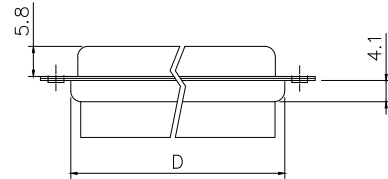
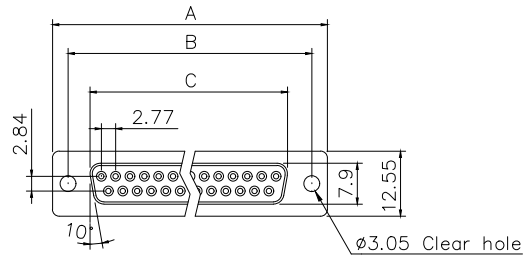
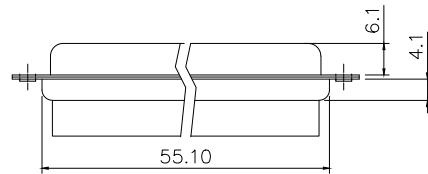
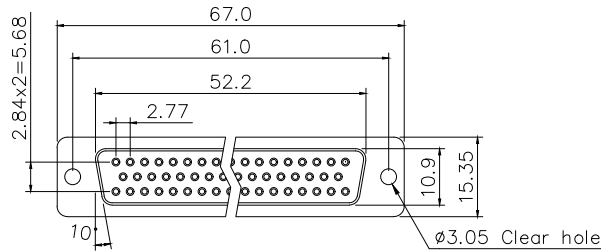


RoHS COMPLIANT

Positions	A	B	C	D
9	30.81	24.99	16.33	19.2
15	39.20	33.30	24.70	27.7
25	53.05	47.04	38.40	41.1
37	69.40	63.50	54.80	57.3



9,15,25,37 Positions



50 Positions

Voltage Current Rating:5 AMP.
Dielectric Withstanding Voltage:1000V AC
Insulation Resistance:1000MΩ Min.
Temperature Range:-25°C to +85°C

PART NO:

B05-0XX2X100-02

NO.OF CONTACT:

- 09 = 9 pos
- 15 = 15 pos
- 25 = 25 pos
- 37 = 37 pos
- 50 = 50 pos

HOUSING COLOR:

- 1 = BLACK
- 5 = WHITE
- 6 = BLUE

ITEM	DESC.	MATERIAL	REMAKS	PART REMAKS
3	REAR SHELL	SPCC	PALTING:Sn	
2	FRONT SHELL	SPCC	PALTING:Ni	
1	HOUSING	PBT+30%GF	COLOR:SEE PART NO.	

QUALITY SYMBOLS

- : CRITICAL
- ☒: MAJOR
- ▽: ZERO DEFECT
- ▽: S.P.C

Tolerance

- x. ±0.50
- .x ±0.30
- .xx ±0.25

NAME:

D-SUB CRIMP 传统母头 (客户用图)

REV: A

SCALE: N:1

UNIT: mm

DATE: 2016/07/22



东莞市林诚塑胶电子有限公司

http://www.lineconn.com

TEL:0769-85181660 85181770

SIDE	DATE	DESCRIPTION	APPROVER
△	2016/07/22	NEW ISSUE	JINGLI

