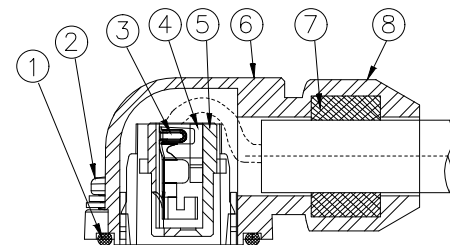
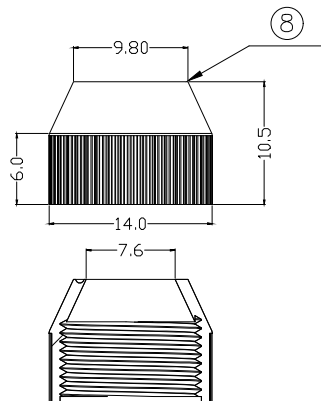
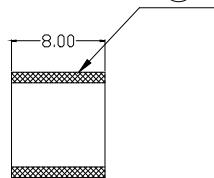
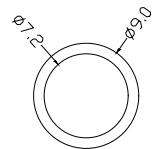
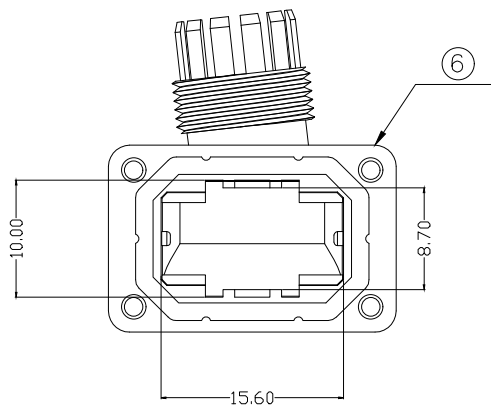
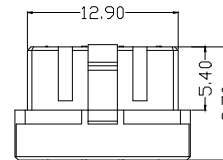
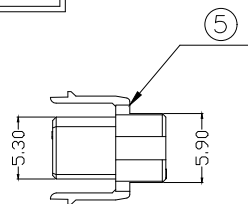
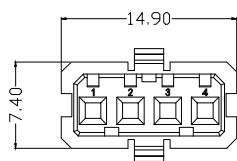
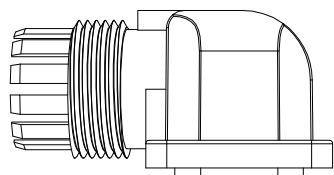
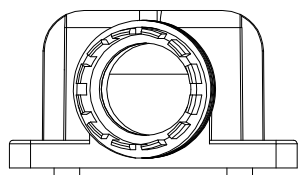
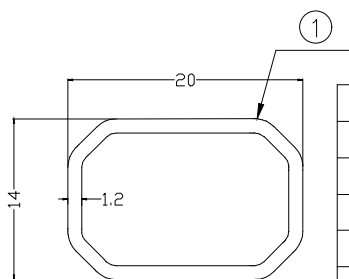
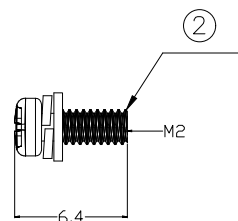
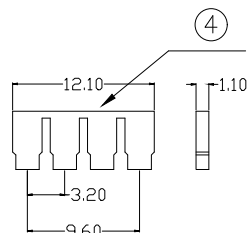
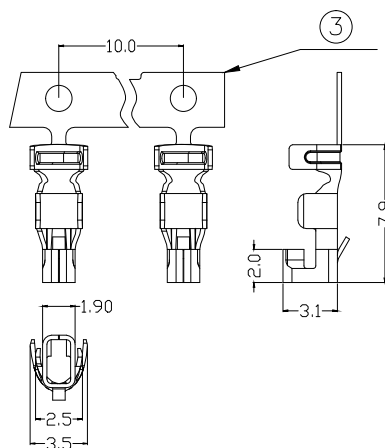


RoHS COMPLIANT



Voltage Current Rating:5 AMP.
 Dielectric Withstanding Voltage:500V AC
 Contact Resistance:30 mΩ Max.
 Insulation Resistance:500MΩ Min.
 Temperature Range:-20℃ to +85℃



| ITEM | DESC. | MATERIAL | REMARKS | PART REMARKS |
|------|------------------|------------------|-------------|--------------|
| 8 | GLAND NUT | SYNTHETIC RESIN | COLOR:BLACK | 1PCS |
| 7 | BUSHING | SYNTHETIC RESIN | COLOR:BLACK | 1PCS |
| 6 | HOOD | SYNTHETIC RESIN | COLOR:BLACK | 1PCS |
| 5 | SOCKET INSULATOR | SYNTHETIC RESIN | COLOR:BLACK | 1PCS |
| 4 | CARD | SYNTHETIC RESIN | COLOR:BLUE | 1PCS |
| 3 | TERMINAL | COPPER ALLOY | PLATING:G/F | 4PCS |
| 2 | SCREW | STEEL | PLATING:Ni | 4PCS |
| 1 | GASKET | SYNTHETIC RUBBER | COLOR:BLACK | 1PCS |

| | | | |
|------|----------------|-------------|----------|
| △ | | | |
| △ | | | |
| △ | 2019/10/09新版发行 | King Zhou | |
| SIDE | DATE | DESCRIPTION | APPROVER |
| 8 | 7 | 6 | 5 |

| | | | | | | | | | | |
|----------------------|--------------|----------------------------|------------------------|-------|------------|-------------------------|-----------|-----------------|-------------|--|
| QUALITY SYMBOLS | Tolerance | NAME: | 三菱伺服 4P动力线防水连接器 (客户用图) | | | | PART NO. | B01-00411154-01 | | |
| □: ☒: | x: ±0.80 | REV: | A | UNIT: | mm | DRW BY | CHK BY | APP BY | DRAWING NO. | |
| CRITICAL MAJOR | .x ±0.50 | SCALE: | N:1 | DATE: | 2019/10/09 | DAWN HU | KING ZHOU | | B01-028 | |
| ▽: ▽: | .xx ±0.25 | Lineconn 东莞市林诚塑胶电子有限公司 | | | | http://www.lineconn.com | | | | |
| ZERO DEFECT S.P.C | | TEL:0769-85181660 85181770 | | | | | | | | |