

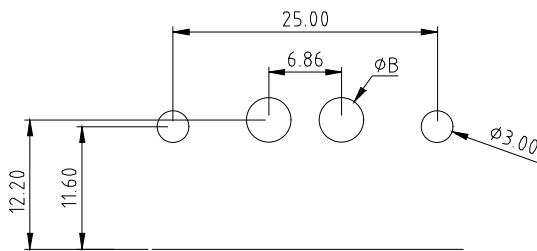
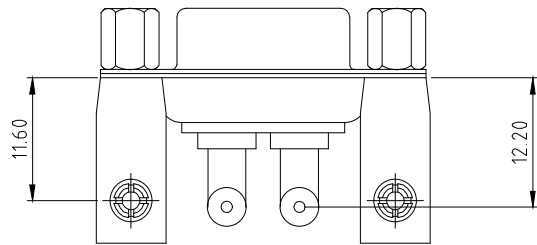
High Power Contact Current Rating:
10,20 or 40AMPS
High Power Contact Resistance:
2.7 Milliohms Max.
Dielectric Withstanding Voltage:
1000V AC For 1 Minute
Insulation Resistance:5000MΩ Min.
Temperature Range:-25°C to +85°C

PART NO:

B09-2V26114D-X1

Current Rating:

- A = 10 AMPS Dim.A ϕ 1.7 Dim.B ϕ 2.2
- B = 20 AMPS Dim.A ϕ 2.8 Dim.B ϕ 3.3
- C = 30 AMPS Dim.A ϕ 3.2 Dim.B ϕ 3.7
- D = 40 AMPS Dim.A ϕ 3.7 Dim.B ϕ 4.2



PCB LAYOUT

ITEM	DESC.	MATERIAL	REMARKS	PART REMARKS
6	JACKSCREWS	BRASS	PLATING:Ni	
5	HOUSING	PBT+30%GF	COLOR: WHITE	
4	RIVETED INSERT	BRASS	PLATING:Ni	
3	REAR SHELL	SPCC	PLATING:Sn	
2	FRONT SHELL	SPCC	PLATING:Ni	
1	TERMINAL	BRASS	TERMINAL FINISH:FULL GOLD FINISHED 2u"	

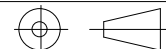
QUALITY SYMBOLS

- : CRITICAL
- ☒: MAJOR
- ▽: ZERO DEFECT
- ▽: S.P.C

Tolerance

- .x ±0.50
- .x ±0.30
- .xx ±0.25

NAME:	2V2 90度母头铆支架鱼叉锁螺丝 POWER D-SUB (客户用图)				PART NO.	B09-2V26114D-X1	
REV:	A	UNIT:	mm	DRW BY	CHK BY	APP BY	DRAWING NO.
SCALE:	N:1	DATE:	2019/09/04	JINGLI	KING ZHOU		B09-006



lineconn 东莞市林诚塑胶电子有限公司 <http://www.lineconn.com>
TEL:0769-85181660 85181770

△	2019/09/04	NEW ISSUE	JINGLI
SIDE	DATE	DESCRIPTION	APPROVER