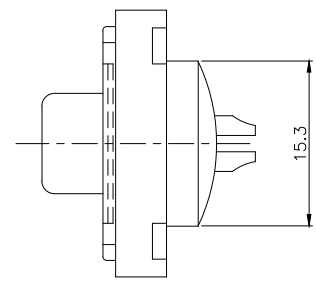
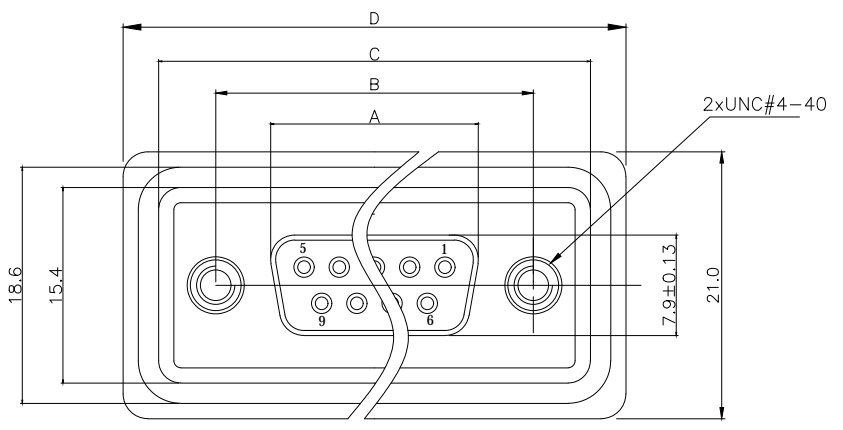
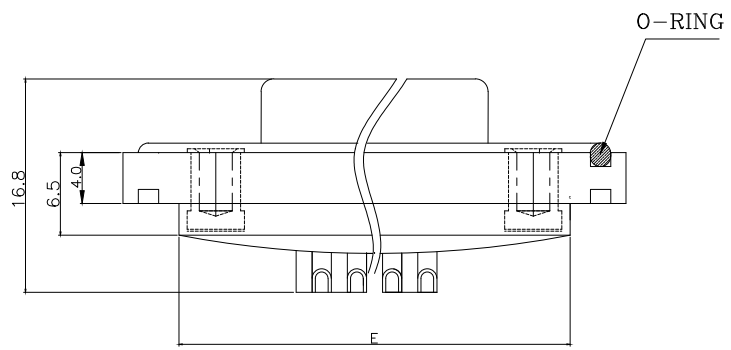


No. of Contact	A ±0.13	B ±0.13	C ±0.38	D ±0.25	E ±0.25
9	16.33	24.99	33.98	39.58	33.98
15	24.66	33.32	42.30	47.90	42.30
25	38.38	47.04	56.02	61.62	55.92
37	54.84	63.50	72.48	78.08	72.48

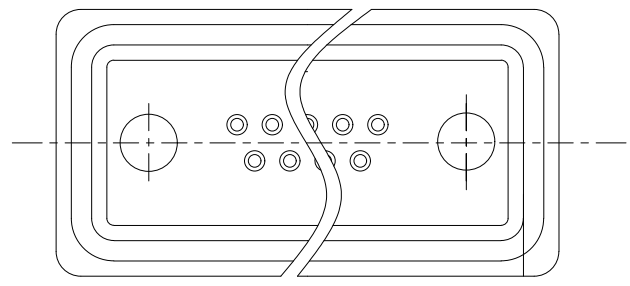


Voltage Current Rating: 5 AMP.
 Contact Resistance: 15mΩ MAX
 Dielectric Withstanding Voltage: 1000V AC
 Insulation Resistance: 5GΩ Min.
 Temperature Range: -25°C to +85°C
 Degree Of Protection: IP68 Accord



PART NO: BA5-0XX411AN-01

NO. OF CONTACT:
 09 = 9 PIN
 15 = 15 PIN
 25 = 25 PIN
 37 = 37 PIN



6	EPOXY SEALANT	EPOXY		
5	O-RING	SILICONE		
4	REAR SHELL	SPCC	PALTING: Sn	
3	FRONT SHELL	SPCC	PALTING: Ni	
2	HOUSING	PBT+30%GF	COLOR: BLACK	
1	TERMINAL	COPPER ALLOY	CONTACT AREA: G/F SOLDER AREA: Sn	
ITEM	DESC.	MATERIAL	REMARKS	PART REMARKS

△	2015/05/20	NEW ISSUE	JINGLI
SIDE	DATE	DESCRIPTION	APPROVER
8	7	6	5

QUALITY SYMBOLS		Tolerance	
□ :	☒ :	.x	±0.50
CRITICAL	MAJOR	.x	±0.30
▽ :	▽ :	.xx	±0.25
ZERO DEFECT	S.P.C		

NAME:		防水D-SUB母头焊线式 (客户用图)				PART NO.		BA5-0XX411AN-01	
REV:	A	UNIT:	mm	DRW BY:	CHK BY:	APP BY:	DRAWING NO.		
SCALE:	N:1	DATE:	2015/05/20	JINGLI	KING ZHOU	BA5-002			
东莞市林诚塑胶电子有限公司				http://www.lineconn.com TEL: 0769-85181660 85181770					
8	7	6	5	4	3	2	1		