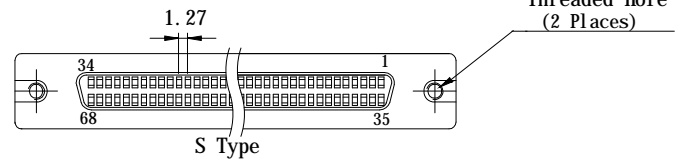
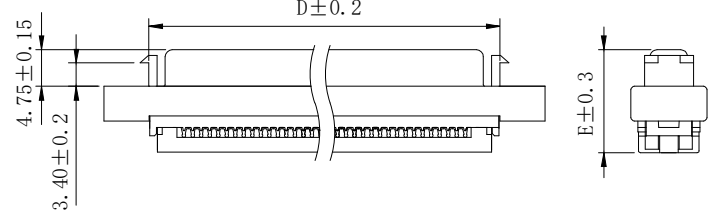
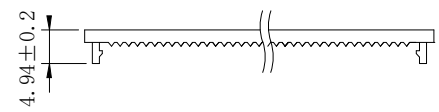
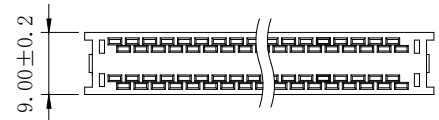
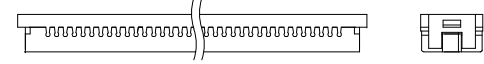
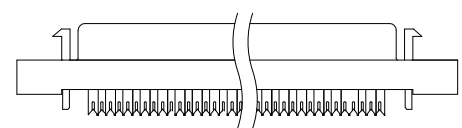
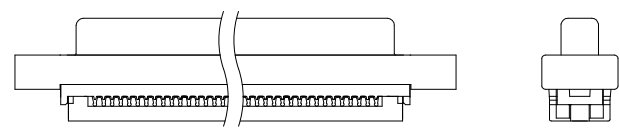


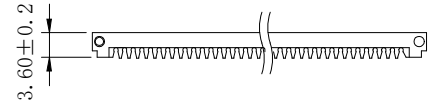
L Type



S Type



Termination Cover
(1 Places)



Wire Holder
(2 Places)

- Current Rating: 1 Amp
- Insulation Resistance: 500MΩ/Min
- Withstanding Voltage: 500V AC/Min
- Contact Resistance: 35mΩ Max
- Temperature Range: -25°C ~ +85°C

PART NO: B02-0XX218EC-X X

No.OF CONTACTS:
 26= 26P
 36= 36P
 50= 50P
 68= 68P

WIRE HOLDER:
 28AWG or 30AWG WIRE
 6= 0.62mm
 7= 0.75mm
 9= 0.90mm

BRACKET FINISHES:
 L:LATCH BRACKET
 S:SCREW BRACKET

Dimensions:

No.of contacts:	A	B	C	D	E
26	37.20	31.26	19.45	24.70	14.40
36	43.50	37.60	25.80	31.00	14.40
50	52.60	46.50	34.70	40.10	15.30
68	64.00	57.95	46.20	50.90	14.60

ITEM	DESC.	MATERIAL	REMAKS	PART REMAKS
4	COVER	PBT+30%GF	COLOR:BLACK	
3	HOUSING	PBT+30%GF	COLOR:BLACK	
2	SHELL	ZINC ALLOY	PLATING:Ni	
1	TERMINAL	PHOSPHOR BRONZE	CONTACT AREA:Au 5u" SOLDER AREA:Sn UNDER-PLATING:Ni	

SIDE	DATE	DESCRIPTION	APPROVER
△	2011/06/09	NEW ISSUE	JINGLI

QUALITY SYMBOLS	Tolerance
□: CRITICAL	x. ±0.50
⊗: MAJOR	.x ±0.30
▽: ZERO DEFECT	.xx ±0.25
S.P.C	

NAME:	SCSI PIN TYPE FEMALE IDC刺破式 (客户用图)			PART NO.	B02-0XX218EC-XX		
REV: A	UNIT: mm	DRW BY: KING ZHOU	CHK BY:	APP BY:	DRAWING NO. B02-019		
SCALE: N:1	DATE: 2011/06/09	JINGLI	KING ZHOU				