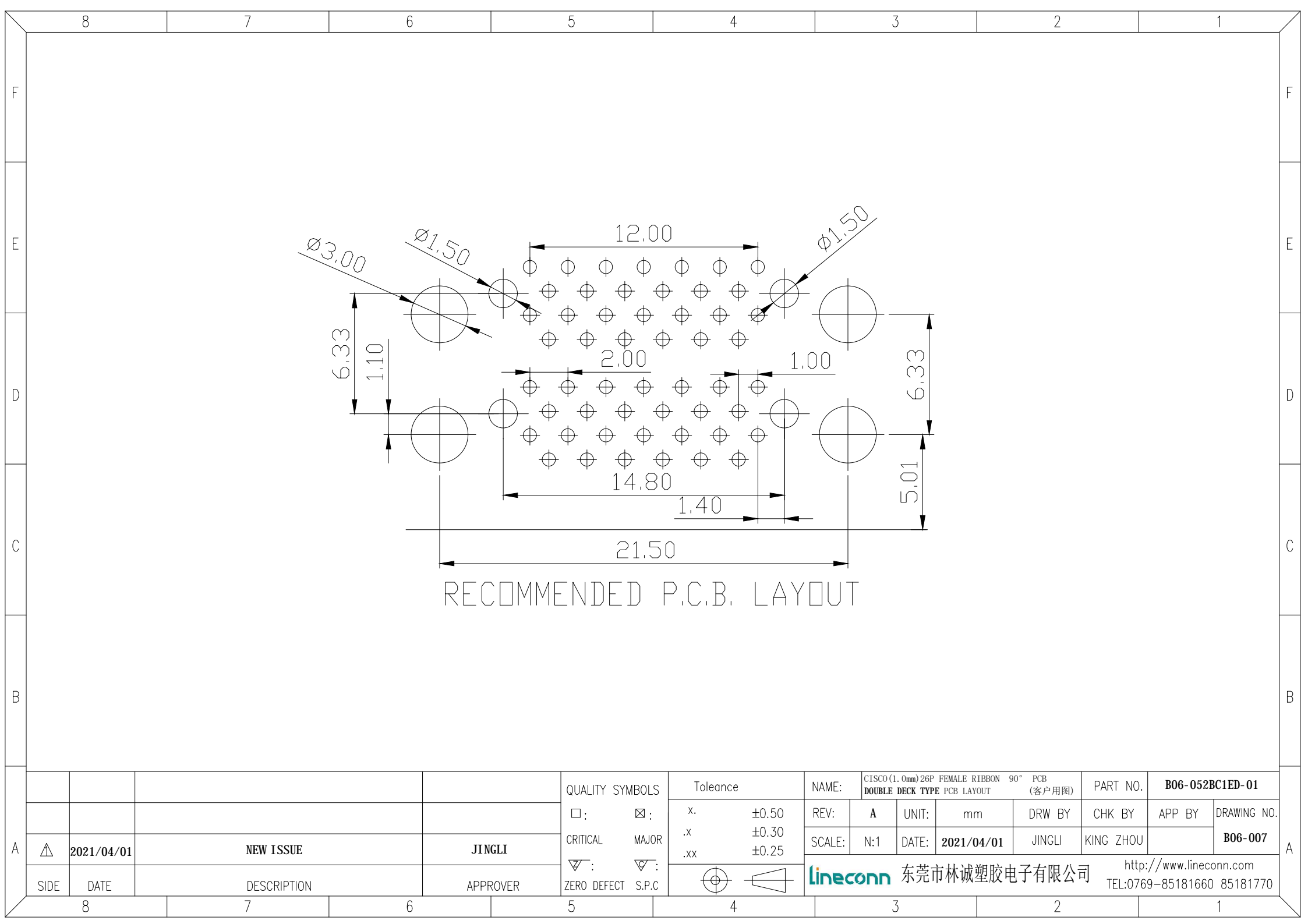




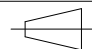
- Current Rating: 1 Amp
- Insulation Resistance: 500MΩ/Min
- Withstanding Voltage: 500V AC/Min
- Contact Resistance: 35mΩ Max
- Temperature Range: -25°C ~ +85°C

6	BOARDLOCK	COPPER ALLOY	PLATING: Tin	
5	BRACKET	SPCC	PLATING: Ni	
4	COVER	LCP+30%GF	COLOR: BEIGE	
3	HOUSING	LCP+30%GF	COLOR: BEIGE	
2	SHELL	SPCC	PLATING: Ni	
1	TERMINAL	PHOSPHOR BRONZE	CONTACT AREA: Au 5u" SOLDER AREA: Sn UNDER-PLATING: Ni	
ITEM	DESC.	MATERIAL	REMARKS	PART REMARKS

				QUALITY SYMBOLS	Tolerance		NAME: CISCO (1.0mm) 26P FEMALE RIBBON 90° PCB DOUBLE DECK TYPE				PART NO. B06-052BC1ED-01	
				□: CRITICAL	⊗: MAJOR	x. ±0.50	REV: A	UNIT: mm	DRW BY: JINGLI	CHK BY: KING ZHOU	APP BY:	DRAWING NO. B06-007
				▽: ZERO DEFECT	▽: S.P.C	.x ±0.30	SCALE: N:1	DATE: 2013/03/07	lineconn 东莞市林诚塑胶电子有限公司			http://www.lineconn.com
						.xx ±0.25	TEL: 0769-85181660 85181770					
SIDE	DATE	DESCRIPTION	APPROVER									
8	7	6	5									1



RECOMMENDED P.C.B. LAYOUT

				QUALITY SYMBOLS	Tolerance	NAME:	CISCO (1.0mm) 26P FEMALE RIBBON 90° PCB DOUBLE DECK TYPE PCB LAYOUT (客户用图)			PART NO.	B06-052BC1ED-01		
				□: ☒:	.x ±0.50	REV:	A	UNIT:	mm	DRW BY	CHK BY	APP BY	DRAWING NO.
				CRITICAL MAJOR	.x ±0.30	SCALE:	N:1	DATE:	2021/04/01	JINGLI	KING ZHOU		B06-007
				∇: ∇:	.xx ±0.25	 东莞市林诚塑胶电子有限公司 http://www.lineconn.com TEL:0769-85181660 85181770							
SIDE	DATE	DESCRIPTION	APPROVER	ZERO DEFECT S.P.C	 								
8	7	6	5	4	3	2	1						