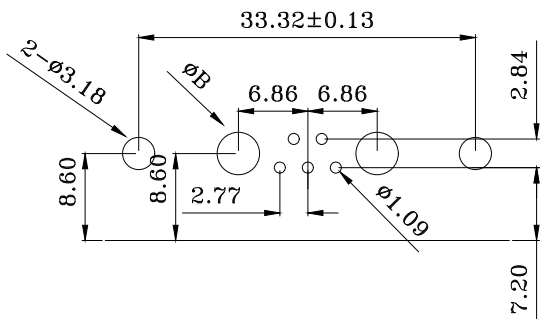


High Power Contact Current Rating:
 10,20 or 40AMPS
 High Power Contact Resistance:
 2.7 Milliohms Max.
 Dielectric Withstanding Voltage:
 1000V AC For 1 Minute
 Insulation Resistance:5000MΩ Min.
 Temperature Range:-25°C to +85°C

PART NO:
 B08-7W25114D-X1

Current Rating: _____
 A = 10 AMPS Dim.A ϕ 1.7 Dim.B ϕ 2.2
 B = 20 AMPS Dim.A ϕ 2.8 Dim.B ϕ 3.3
 C = 30 AMPS Dim.A ϕ 3.2 Dim.B ϕ 3.7
 D = 40 AMPS Dim.A ϕ 3.7 Dim.B ϕ 4.2



PCB LAYOUT

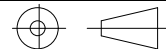
ITEM	DESC.	MATERIAL	REMARKS	PART REMARKS
6	JACKSCREWS	BRASS	PLATING: Ni	
5	HOUSING	PBT+30%GF	COLOR: WHITE	
4	RIVETED INSERT	BRASS	PLATING: Ni	
3	REAR SHELL	SPCC	PLATING: Sn	
2	FRONT SHELL	SPCC	PLATING: Ni	
1	TERMINAL	BRASS	TERMINAL FINISH: FULL GOLD FINISHED 2u"	

QUALITY SYMBOLS

□: ☒: CRITICAL MAJOR ZERO DEFECTS.P.C

Tolerance

x. ±0.50
 .x ±0.30
 .xx ±0.25



NAME:	7W2 90度公头柳支架鱼叉锁螺丝 POWER D-SUB (客户用图)				PART NO.	B08-7W25114D-X1		
REV:	A	UNIT:	mm	DRW BY	CHK BY	APP BY	DRAWING NO.	
SCALE:	N:1	DATE:	2017/05/08	JINGLI	KING ZHOU		B08-037	

lineconn 东莞市林诚塑胶电子有限公司 <http://www.lineconn.com>
 TEL: 0769-85181660 85181770

△	2017/05/08	NEW ISSUE	JINGLI
SIDE	DATE	DESCRIPTION	APPROVER