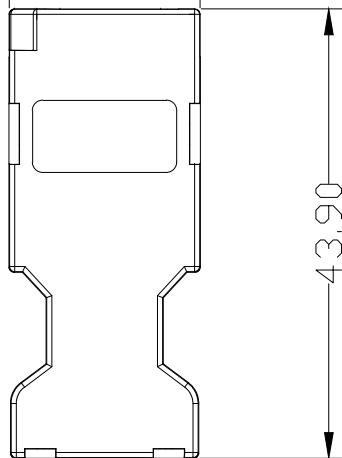


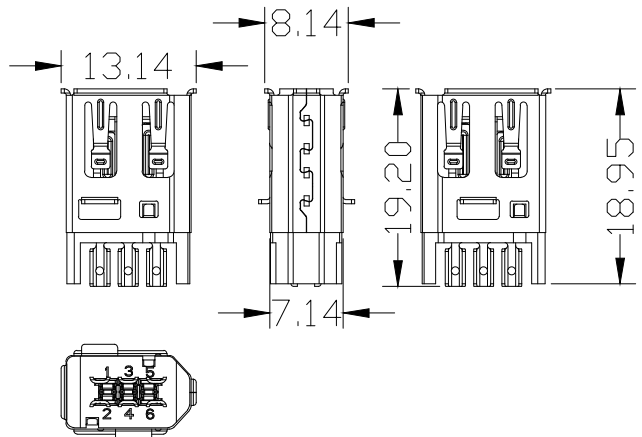
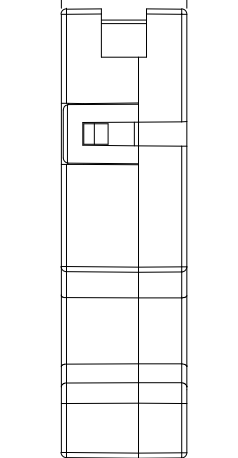
6.20

18.70



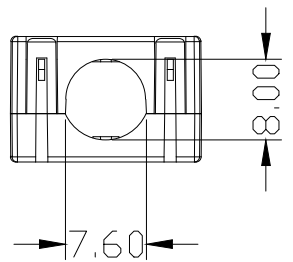
43.90

12.60



**ELECTRICAL CHARACTERISTICS**

- Contact Current Rating: 1 Amp
- Dielectric Withstanding Voltage: 500V AC
- Insulation Resistance: 500MΩ/Min
- Contact Resistance: 35mΩ/Max
- Operation Temperature: -25°C ~ +85°C



8.00

7.60

ITEM	DESC.	MATERIAL	REMARKS	PART REMARKS
4	HOOD	ABS	COLOR: GRAY	
3	HOUSING	LCP+30%GF	COLOR: BLACK	
2	SHELL	COPPER ALLOY	PLATING: MATTE TIN	
1	TERMINAL	COPPER ALLOY	CONTACT AREA: G/F SOLDER AREA: Sn UNDER-PLATING: Ni	

A	△				QUALITY SYMBOLS	Tolerance	NAME:	SM 6P FEMALE SOLDER 伺服连接器 (客户用图)				PART NO.	B01-006429A1-02	
	△				□:    ☒:	x.    ±0.80	REV:	A	UNIT:	mm	DRW BY	CHK BY	APP BY	DRAWING NO.
	△	2016/07/14	新版发行	King Zhou	CRITICAL    MAJOR	.x    ±0.50	SCALE:	N:1	DATE:	2016/07/14	DAW NHU	KING ZHOU		B01-018
	SIDE	DATE	DESCRIPTION	APPROVER	▽:    ▽:	.xx    ±0.30								
	8	7	6	5	ZERO DEFECT    S.P.C		东莞市林诚塑胶电子有限公司				<a href="http://www.lineconn.com">http://www.lineconn.com</a> TEL:0769-85181660 85181770			