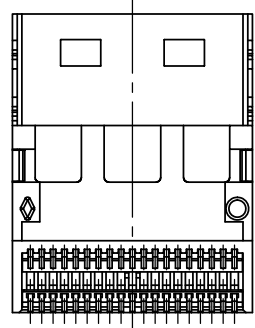
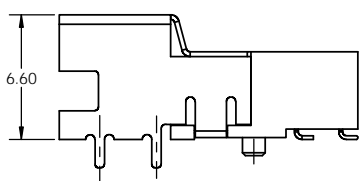
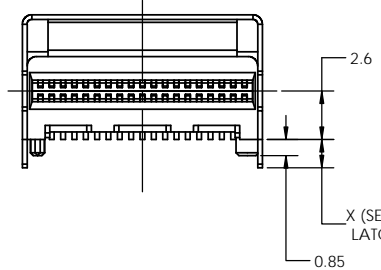
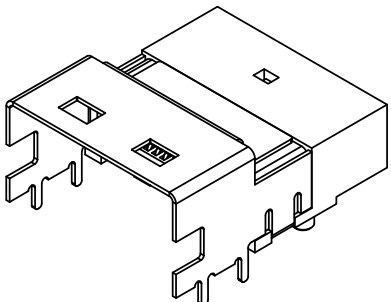
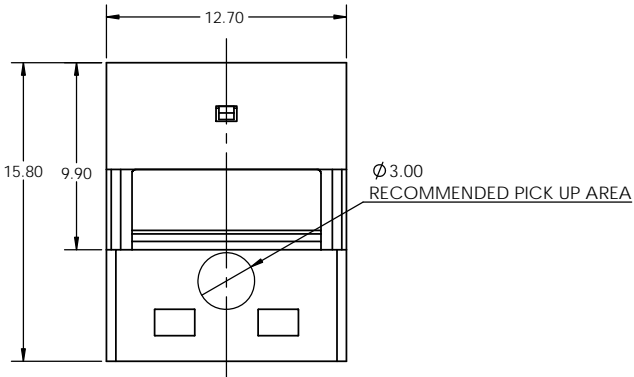
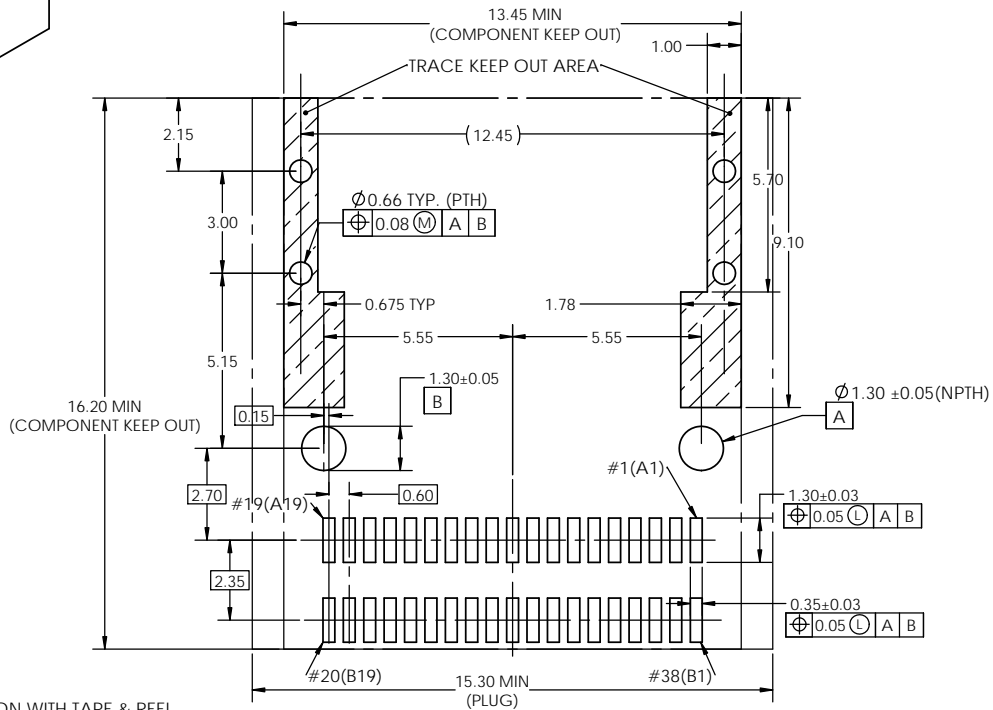


REVISIONS			
REV	DESCRIPTION, ECN, EAR NO.	DATE	APP'D
M	UPDATE DESCRIPTION	APR06/16	JS



U10 - C038 - X X X X

- OPTIONS**
- QT** = STANDARD CONSTRUCTION WITH TAPE & REEL PACKAGING
 - 1I** = NO RESONANCE DAMPING WITH TAPE & REEL PACKAGING
- LATCH PIN OPTION**
- 0** = 1.5mm LONG
 - 4** = 2.2mm LONG
 - 5** = 3.0mm LONG
 - 6** = 4.2mm LONG
- CONTACT PLATING OPTION**
- 2** = 30 MICROINCHES OF GOLD ON MATING END WITH 100 MICROINCHES MINIMUM OF MATTE TIN ON SOLDER TERMINATION. 50-75 MICROINCHES OF NICKEL UNDERPLATE ALL OVER
 - 3** = 15 MICROINCHES OF GOLD ON MATING END WITH 100 MICROINCHES MINIMUM OF MATTE TIN ON SOLDER TERMINATION. 50-75 MICROINCHES OF NICKEL UNDERPLATE ALL OVER



NOTES:

1) MATERIAL:
HOUSING: SOLDER REFLOW PROCESS COMPATIBLE LCP, UL94V-0
CONTACTS: HIGH PERFORMANCE COPPER ALLOY
LATCH: PHOSPHOR BRONZE
RESONANCE DAMPENING FEATURE: SEMI-CONDUCTIVE POLYMER

2) RoHS COMPLIANT



THIS DOCUMENT CONTAINS PROPRIETARY INFORMATION AND SUCH INFORMATION MAY NOT BE DISCLOSED TO OTHERS FOR ANY PURPOSE OR USED FOR MANUFACTURING PURPOSES WITHOUT WRITTEN PERMISSION FROM AMPHENOL CANADA CORP.

UNLESS SPECIFIED OTHERWISE	DRAWN	C.MICHLIK	NOV27/13
PRIMARY UNITS MILLIMETERS	CHECKED	BA P	SEP19/14
SECONDARY	M.E. APP'D		
REFERENCE IN PARENTHESES	Q.A. APP'D		
GENERAL TOLERANCES	DWG APP'D	C.MICHLIK	NOV27/13
1 DECIMAL PLACE ±0.35	ENG. REL. NO.	ECN TBD	
2 DECIMAL PLACES ±0.25	REF.		
3 DECIMAL PLACES ±0.15	THIRD ANGLE PROJECTION		
ANGULAR DEGREES ±2°	DO NOT SCALE DRAWING		

Amphenol High Speed Interconnects
A Division of Amphenol Corp. www.amphenolcanada.com

ULTRAPORT SLIMSAST™ 4X24 R/A RECEPTACLE WITH LATCH

DWG. NO. **P-U10-C038-XXXX** REV **M**

CODE ID NO. **03554** DWG SIZE: **C** SCALE: **5:1** SHEET **1 OF 1**