

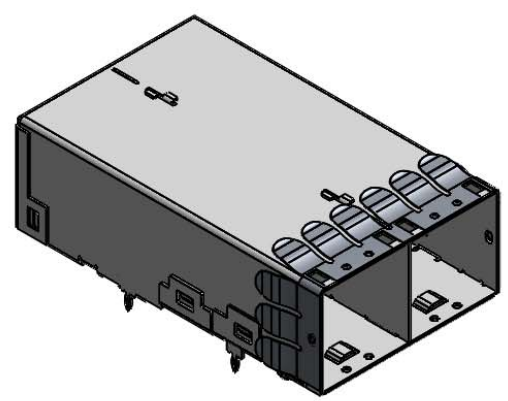
REVISIONS			
REV.	DESCRIPTION	DATE	APPROVED
A	PROPOSAL	MAY 06/19	J.SI

U92 - L211 - 1X01 - 7X

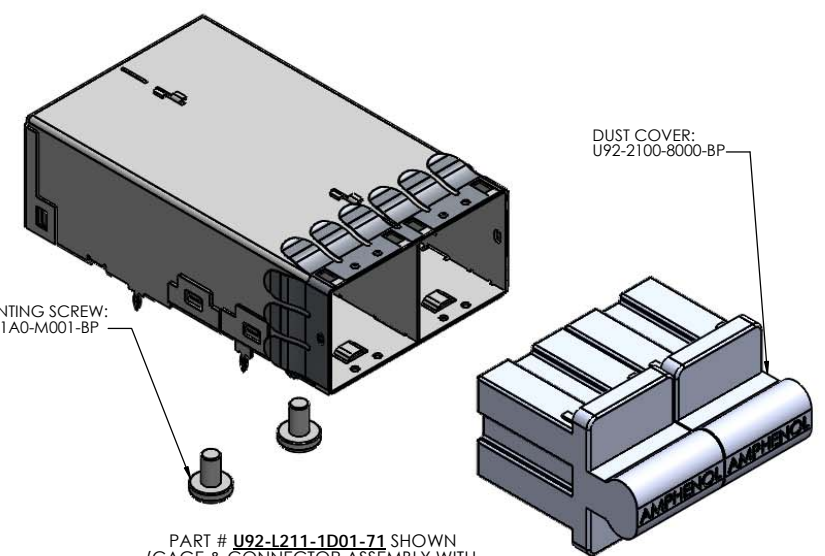
OPTIONAL DUST COVER
0 - NO DUST COVER
D - WITH DUST COVER (SHIPPED BULK IN SAME BOX WITH CAGE & CONNECTOR ASSEMBLY)

MOUNTING SCREWS
0 - NO MOUNTING SCREWS SHIPPED
1 - WITH MOUNTING SCREWS M2 X 04 - 4.3 MM LONG SHIPPED BULK IN SAME TRAY WITH CAGE ASSEMBLIES

CONTACT PLATING
 MATING AREA PLATING: 0.76 µm GOLD OVER 1.27 µm TO 3.81 µm OF NICKEL
 PRESS FIT TAIL AREA PLATING: 0.381 µm TO 1.52 µm OF MATTE TIN OVER 1.27 µm TO 3.81µm OF NICKEL
 (RoHS COMPLIANT PER RoHS DIRECTIVE 2011/65/EU)



PART # **U92-L211-1001-70** SHOWN
 (CAGE & CONNECTOR ASSEMBLY,
 NO SCREWS AND NODUST COVER SHIPPED)



MOUNTING SCREW:
 U92-21A0-M001-BP

DUST COVER:
 U92-2100-8000-BP

PART # **U92-L211-1D01-71** SHOWN
 (CAGE & CONNECTOR ASSEMBLY WITH
 WITH SCREWS AND WITHDUST COVER SHIPPED BULK)

NOTES:

- 1) MATERIAL
- MAIN CAGE: PHOSPHOR BRONZE WITH NICKEL PLATING
 - EMI FINGERS: PHOSPHOR BRONZE WITH NICKEL PLATING
 - MOUNTING SCREW: AISI 1010 STEEL
 - CONNECTOR HOUSING: LCP
 - CONTACTS: PHOSPHOR BRONZE, FOR PLATING INFO, SEE PART NUMBER CONFIGURATION FOR OPTIONS.

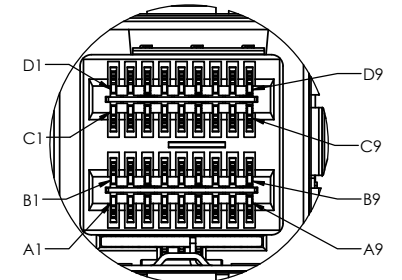
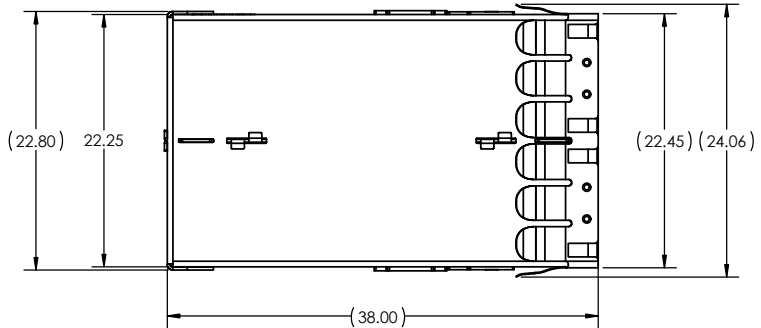
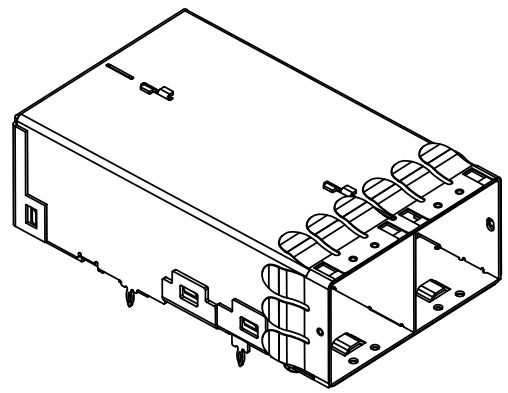
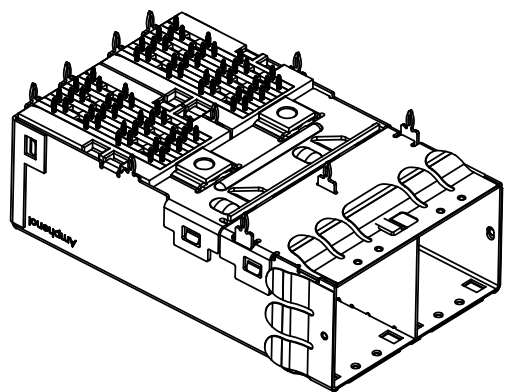
- 2) PACKAGING:
 TRAY PACKAGING



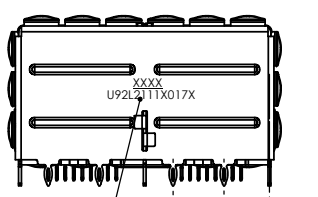
UNLESS OTHERWISE SPECIFIED: DIMENSIONS ARE IN MILLIMETERS TOLERANCES ARE:		APPROVAL	DATE
DRAWN	Hank.A	MAY 06/19	Amphenol High Speed Interconnects A Division of Amphenol Corp. www.amphenol-highspeed.com 8X MINI SAS HD CAGE AND CONNECTOR 2 PORT ASSEMBLY WITH LONG EMI FINGER
CHECKED	Chigow.X	MAY 06/19	
QA APPR.			
ME APPR.			
DWG APPR.	J.SI	MAY 06/19	
 DO NOT SCALE DRAWING		ENG. REL. NO.	SCALE: 1:1
		NSCM:	PROJECT: HD

SIZE	DWG. NO.	REV
	P-U92-L211-1X01-7X	A
		SHEET 1 OF 4

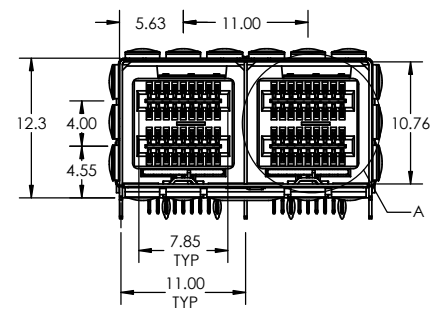
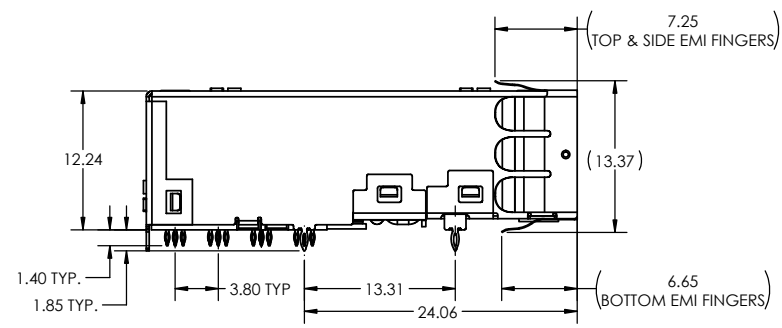
REVISIONS			
REV.	DESCRIPTION	DATE	APPROVED
A	PROPOSAL	MAY 06/19	J.SI



DETAIL A
SCALE 6:1



INK MARKING INFO:
FOUR (4) DIGIT DATE CODE
AND PART NUMBER



UNLESS OTHERWISE SPECIFIED: DIMENSIONS ARE IN MILLIMETERS TOLERANCES ARE:		APPROVAL	DATE
DRAWN	Hank.A	MAY 06/19	
CHECKED	Chigow.X	MAY 06/19	
QA APPR.			
ME APPR.			
DWG APPR.	J.SI	MAY 06/19	
ENG. REL. NO.		SIZE	DWG. NO.
DO NOT SCALE DRAWING			P-U92-L211-1X01-7X
NSCM:		SCALE: 2:1	PROJECT: HD

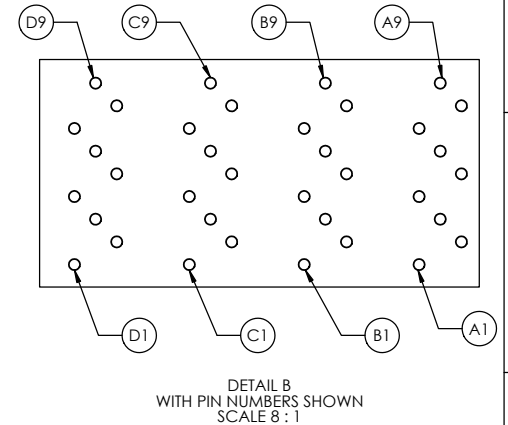
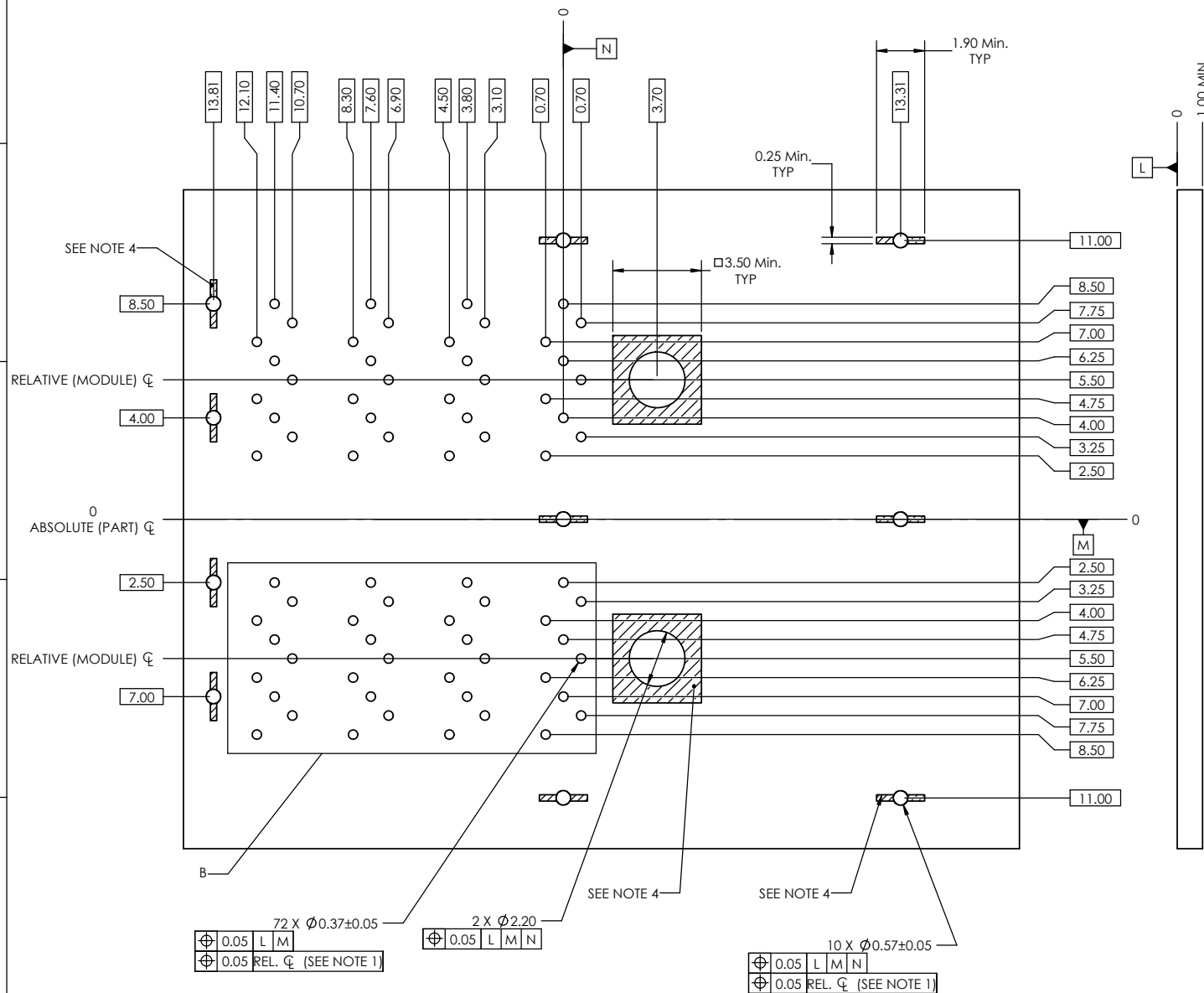
Amphenol High Speed Interconnects
A Division of Amphenol Corp. www.amphenol-highspeed.com

**8X MINI SAS HD
CAGE AND CONNECTOR
2 PORT ASSEMBLY
WITH LONG EMI FINGER**

REV A

SHEET 2 OF 4

REVISIONS			
REV.	DESCRIPTION	DATE	APPROVED
A	PROPOSAL	MAY 06/19	J.SI



- NOTES:
1. ALL HOLES MUST FALL WITHIN POSITIONAL TOLERANCES RELATIVE TO INDIVIDUAL CONNECTOR ASSEMBLY AS WELL AS COMPLETED CAGE ASSEMBLY.
 2. DATUM M AND N ESTABLISHED BY CUSTOMER'S FUDICIAL.
 3. ALL HOLE DIMENSIONS DENOTE FINISHED HOLE SIZES.
 4. CAGE STAND OFF & SCREW AREA, NO TRACES IN THESE AREAS.

72 X $\phi 0.37 \pm 0.05$
 $\phi 0.05$ L M
 $\phi 0.05$ REL. ϕ (SEE NOTE 1)

2 X $\phi 2.20$
 $\phi 0.05$ L M N

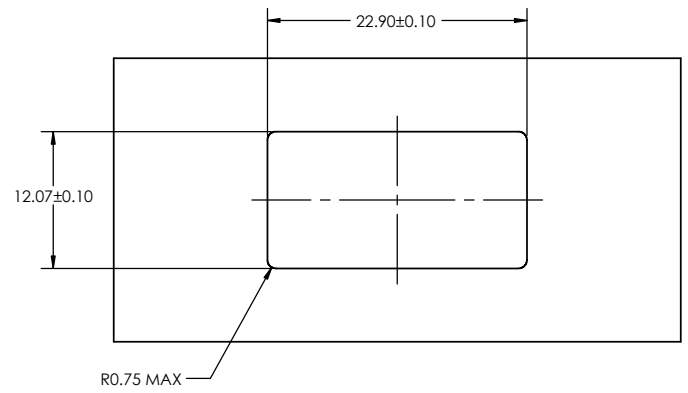
10 X $\phi 0.57 \pm 0.05$
 $\phi 0.05$ L M N
 $\phi 0.05$ REL. ϕ (SEE NOTE 1)

RECOMMENDED 2 PORT MOUNT
 PCB LAYOUT
 COMPONENT SIDE SHOWN

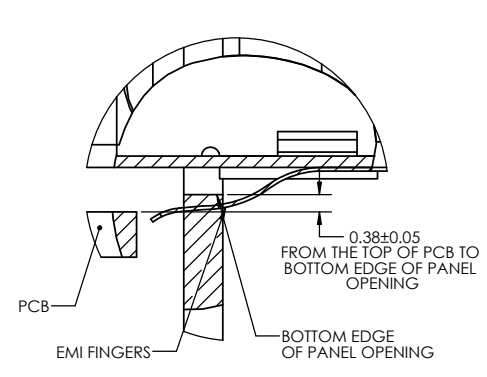
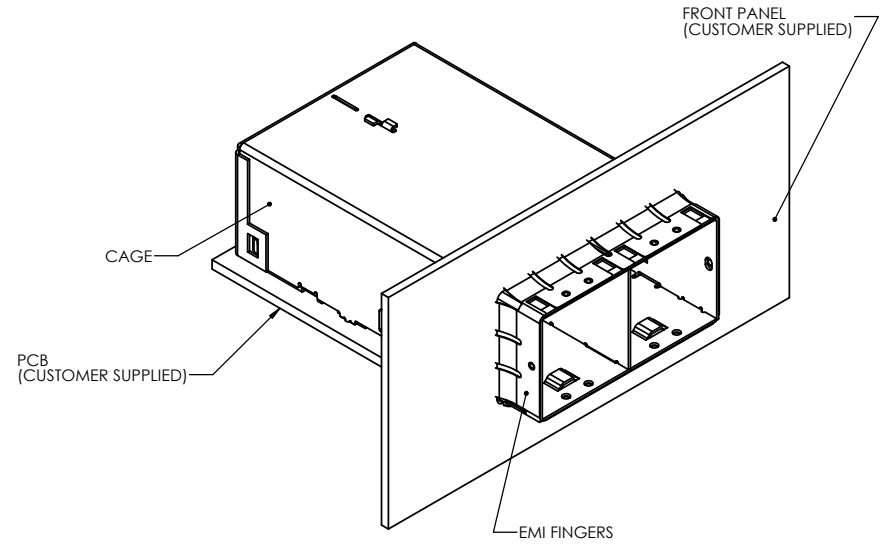
UNLESS OTHERWISE SPECIFIED: DIMENSIONS ARE IN MILLIMETERS TOLERANCES ARE:		APPROVAL	DATE
DRAWN	Hank.A	MAY 06/19	Amphenol High Speed Interconnects A Division of Amphenol Corp. www.amphenol-highspeed.com 8X MINI SAS HD CAGE AND CONNECTOR 2 PORT ASSEMBLY WITH LONG EMI FINGER
CHECKED	Chigow.X	MAY 06/19	
QA APPR.			
ME APPR.			
DWG APPR.	J.SI	MAY 06/19	
DECIMALS .X ± 0.25 ANGLES X° $\pm 1^\circ$.XX ± 0.13 X.X° $\pm 0.5^\circ$		ENG. REL. NO.	SCALE: 2:1
DO NOT SCALE DRAWING		NSCM:	PROJECT: HD

SIZE	DWG. NO.	P-U92-L211-1X01-7X	REV	A
SHEET		SHEET 3 OF 4		

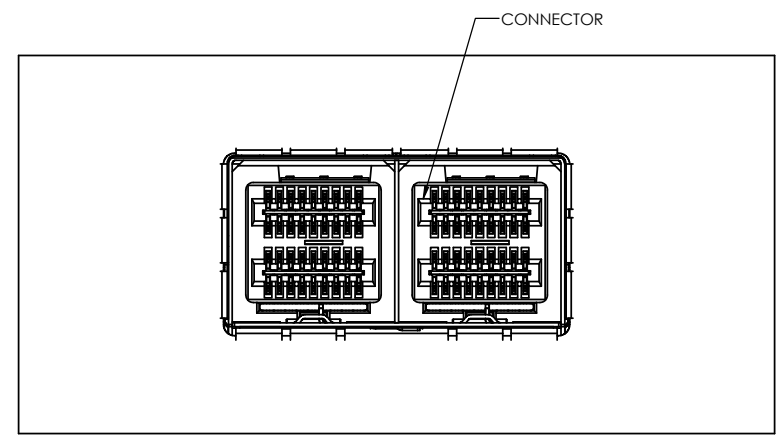
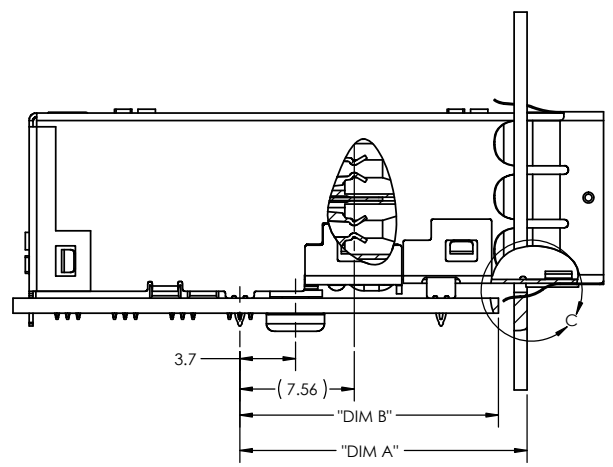
REVISIONS			
REV.	DESCRIPTION	DATE	APPROVED
A	PROPOSAL	MAY 06/19	J.SI



RECOMMENDED PANEL CUTOUT FOR **SINGLE LEVEL** MOUNTING



DETAIL C
SCALE 12:1



APPLICATION	DIM A	DIM B
OTHER M/B BRACKET	20.08	18.19
PCI BRACKET	19.00	17.10

UNLESS OTHERWISE SPECIFIED: DIMENSIONS ARE IN MILLIMETERS TOLERANCES ARE:		APPROVAL	DATE
DRAWN	Hank.A	MAY 06/19	Amphenol High Speed Interconnects A Division of Amphenol Corp. www.amphenol-highspeed.com 8X MINI SAS HD CAGE AND CONNECTOR 2 PORT ASSEMBLY WITH LONG EMI FINGER
CHECKED	Chigow.X	MAY 06/19	
QA APPR.			
ME APPR.			
DWG APPR.	J.SI	MAY 06/19	
DO NOT SCALE DRAWING		ENG. REL. NO.	SIZE
NSCM:			DWG. NO. P-U92-L211-1X01-7X
		SCALE: 1:1	PROJECT: HD
			SHEET 4 OF 4

REV	A
-----	---