

PART NO.:

B03-0503X1X2-X1

COLOR:

1:BLACK

C:BEIGE

CONTACT AREA:

A:G/F

E:AU 5u"

H:AU 15u"

HOOD OD :

7:7.0mm

8:8.0mm

9:9.0mm

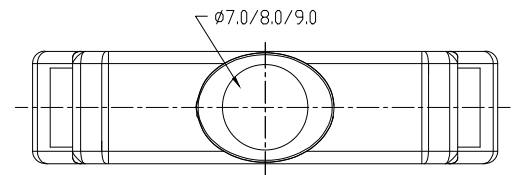
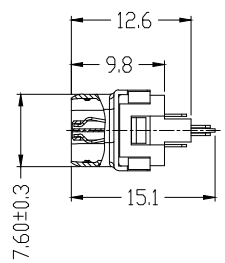
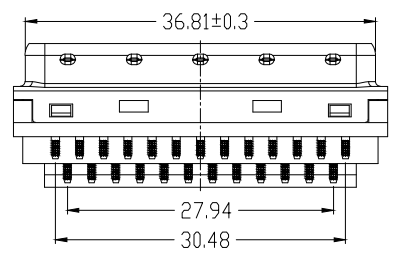
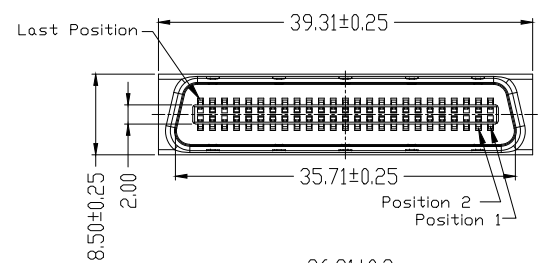
Contact Current Rating: 1 Amp

Dielectric Withstanding Voltage: 500V AC

Insulation Resistance: 500MΩ/Min

Contact Resistance: 35mΩ/Max

Operation Temperature: -25°C ~ +85°C



6	SHRAPNEL	SUS		
5	OUTSIDE SHEEL	SPCC	PLATING: Ni	
4	HOOD&WRENCH	ABS+G.F.30% (UL 94V-0)	COLOR: SEE P/N	
3	HOUSING&COVER	PBT+G.F.30% (UL 94V-0)	COLOR: BLACK	
2	SHEEL	SPCC	PLATING: Ni	
1	TERMINAL	COPPER ALLOY	CONTACT AREA: P/N SOLDER AREA: Sn UNDER-PLATING: Ni	
ITEM	DESC.	MATERIAL	REMAKS	PART REMAKS

△				QUALITY SYMBOLS
△				□: ☒:
△	2009/04/02 新版发行		King Zhou	CRITICAL MAJOR
SIDE	DATE	DESCRIPTION	APPROVER	ZERO DEFECT S.P.C

Tolerance		NAME:		SCSI 50P MALE 焊线塑壳装配式鱼钩弹片 (客户用图)				PART NO.		B03-0503X1X2-X1	
x.	±0.80	REV:	A	UNIT:	mm	DRW BY	CHK BY	APP BY	DRAWING NO.		
.x	±0.50	SCALE:	N:1	DATE:	2009/04/02	DAW NHU	KING ZHOU		B03-028		
.xx	±0.30	Lineconn 东莞市林诚塑胶电子有限公司				http://www.lineconn.com		TEL:0769-85181660 85181770			