

PART NO.:

B03-0263X1X2-X1

COLOR:

- 1:BLACK
- C:BEIGE

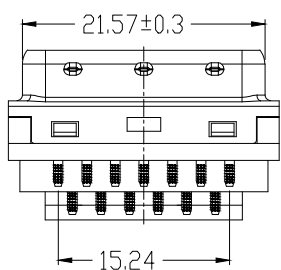
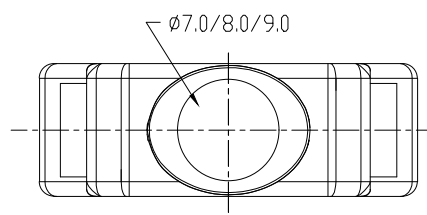
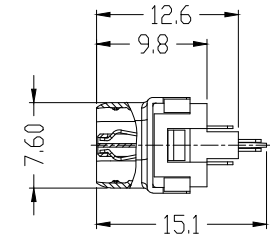
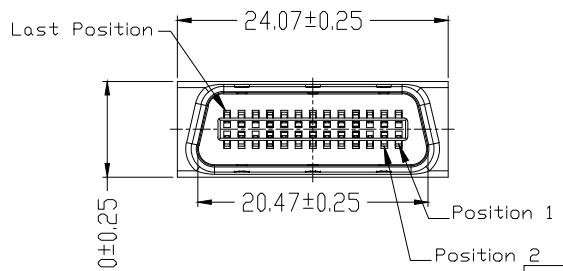
CONTACT AREA:

- A:G/F
- E:Au 5u"
- H:Au 15u"

HOOD OD :

- 7:7.0mm
- 8:8.0mm
- 9:9.0mm

Contact Current Rating: 1 Amp
 Dielectric Withstanding Voltage: 500V AC
 Insulation Resistance: 500MΩ/Min
 Contact Resistance: 35mΩ/Max
 Operation Temperature: -25°C ~ +85°C



6	SHRAPNEL	SUS		
5	OUTSIDE SHEEL	SPCC	PLATING: Ni	
4	HOOD&WRENCH	ABS+G.F.30% (UL 94V-0)	COLOR: SEE P/N	
3	HOUSING&COVER	PBT+G.F.30% (UL 94V-0)	COLOR: BLACK	
2	SHEEL	SPCC	PLATING: Ni	
1	TERMINAL	COPPER ALLOY	CONTACT AREA: P/N SOLDER AREA: Sn UNDER-PLATING: Ni	
ITEM	DESC.	MATERIAL	REMAKS	PART REMAKS

△				QUALITY SYMBOLS
△				□: ☒:
△	2009/04/02新版发行		King Zhou	CRITICAL MAJOR
SIDE	DATE	DESCRIPTION	APPROVER	▽: ▽: ZERO DEFECT S.P.C
8	7			

Tolerance		NAME:	SCSI 26P MALE 焊线塑胶装配式鱼钩弹片 (客户用图)			PART NO.	B03-0263X1X2-X1		
x.	±0.80	REV:	A	UNIT:	mm	DRW BY	CHK BY	APP BY	DRAWING NO.
.x	±0.50	SCALE:	N:1	DATE:	2009/04/02	DAW NHU	KING ZHOU		B03-030
.xx	±0.30								
		东莞市林诚塑胶电子有限公司			http://www.lineconn.com TEL:0769-85181660 85181770				
4	3	2	1						