

PART NO.:

B03-0143X1X2-X1

COLOR:

1:BLACK

C:BEIGE

CONTACT AREA:

A:G/F

E:Au 5u"

H:Au 15u"

HOOD OD :

6:6.0mm

D:6.5mm

7:7.0mm

E:7.5mm

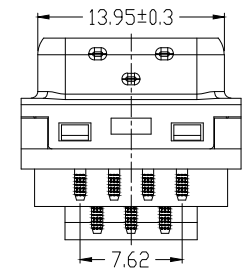
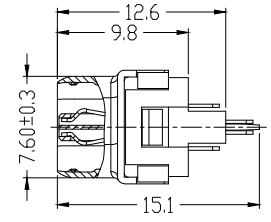
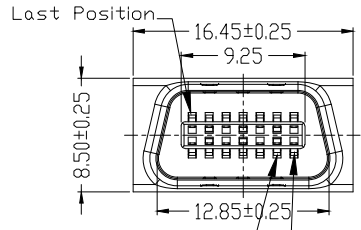
Contact Current Rating: 1 Amp

Dielectric Withstanding Voltage: 500V AC

Insulation Resistance: 500MΩ/Min

Contact Resistance: 35mΩ/Max

Operaion Temperature: -25°C ~ +85°C

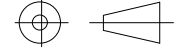


6	SHRAPNEL	SUS		
5	OUTSIDE SHEEL	SPCC	PLATING: Ni	
4	HOOD&WRENCH	ABS+G.F.30% (UL 94V-0)	COLOR: SEE P/N	
3	HOUSING&COVER	PBT+G.F.30% (UL 94V-0)	COLOR: BLACK	
2	SHEEL	SPCC	PLATING: Ni	
1	TERMINAL	COPPER ALLOY	CONTACT AREA: P/N SOLDER AREA: Sn UNDER-PLATING: Ni	
ITEM	DESC.	MATERIAL	REMAKS	PART REMAKS

△				QUALITY SYMBOLS
△				□: ☒:
△	2009/04/02新版发行		King Zhou	CRITICAL MAJOR
SIDE	DATE	DESCRIPTION	APPROVER	▽: ▽:
8	7			ZERO DEFECT S.P.C

Tolerance		NAME:	SCSI 14P MALE 焊线塑胶装配式鱼钩弹片 (客户用图)			PART NO.	B03-0143X1X2-X1	
.x	±0.80	REV:	A	UNIT:	mm	DRW BY	CHK BY	APP BY
.x	±0.50	SCALE:	N:1	DATE:	2009/04/02	DAW NHU	KING ZHOU	DRAWING NO.
.xx	±0.30	Lineconn 东莞市林诚塑胶电子有限公司						B03-032

http://www.lineconn.com						TEL:0769-85181660 85181770		
-------------------------	--	--	--	--	--	----------------------------	--	--



Lineconn 东莞市林诚塑胶电子有限公司