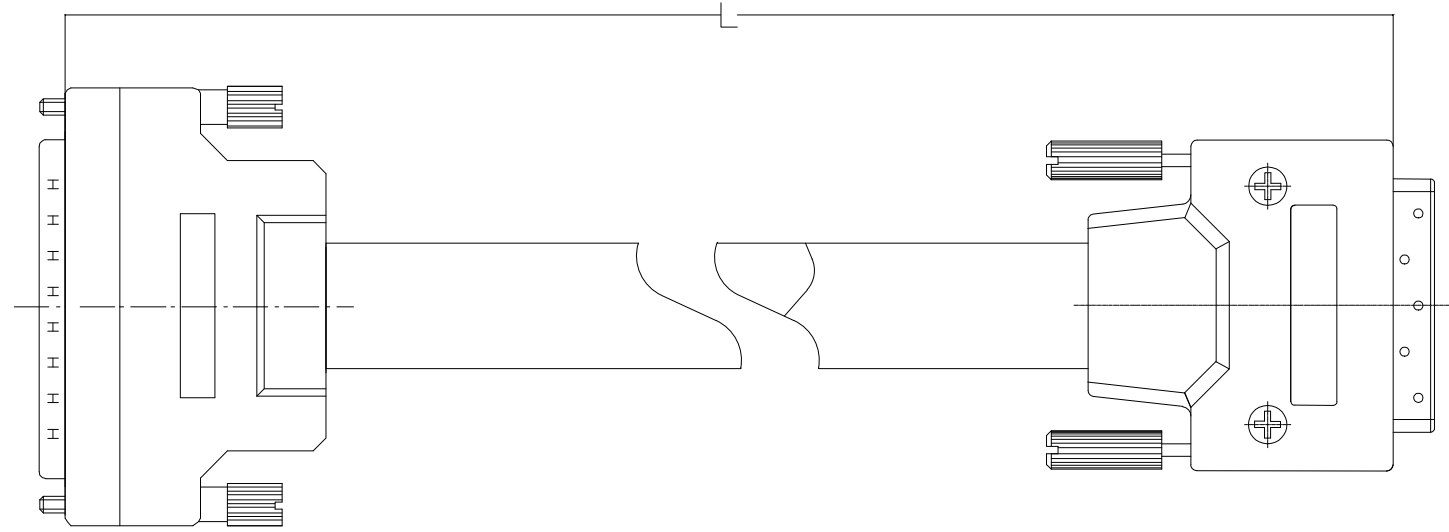


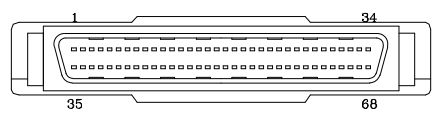
RoHS

P1

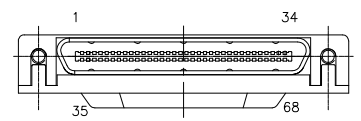
P2



P1



P2



PIN ASSIGNMENT

P1	SIGNAL	P2
1		1
2		2
3		3
4~65		4~65
66		66
67		67
68		68
Shell		Shell

PART NO.:
 A09-0686X XXX-001
 COLOR: _____
 1: BLACK
 2: GRAY
 LENGTH: _____
 010:1m
 100:10m

- NOTES:
 1. ELECTRICAL TEST: 100% OPEN, SHORT & MISS WIRE TEST.
 2. CONDUCTOR RESISTANCE: 5 OHMS MAX.
 3. INSULATOR RESISTANCE: 1M OHMS MIN, DC 300V 0.01sec.
 4. THIS PRODUCT MEET ROHS STANDARD ENVIRONMENTAL PROTECTION POLICY.

QUALITY SYMBOLS

- : ☒: CRITICAL MAJOR
 ZERO DEFECT S.P.C

Tolerance	
尺寸(MM)	公差(MM)
300~2000	±50
2001~5000	±100
5001~	±150

NAME:	SCSI II 68P MALE-VHDCI 68P MALE CABLE ASSEMBLY SCREW (客户用图)			PART NO.	A09-0686X XXX-01		
REV:	A	UNIT:	mm	DRW BY	CHK BY	APP BY	DRAWING NO.
SCALE:	NONE	DATE:	2014/04/19	Jing Li	Jack Chen		A09-006

lineconn 东莞市林诚塑胶电子有限公司 <http://www.lineconn.com>
 TEL:0769-85181660 85181770

△			
△			
△	2014/04/19	新版发行	Jack Chen
SIDE	DATE	DESCRIPTION	APPROVER